

OLBRICH
GARDEN NEWS
— WINTER 2022 —





2022 Olbrich Botanical Society BOARD OF DIRECTORS

PRESIDENT

Philip Bradbury

VICE PRESIDENT

Alnisa Allgood

SECRETARY

Renee Boyce

TREASURER

Laura Peterson

PAST PRESIDENT

Julie Rupert

DIRECTORS

Julie Bernauer

Matt Cornwell

Susan Goodwin

Bethany Ordaz

Laura Peterson

Juscha E.M. Robinson

Maurice C. Sheppard

Timothy W. Sherry

Sandra H. Statz

William White

EX OFFICIO DIRECTORS

Betty Chewing,
*SASY Neighborhood
Association Representative*

Liz Dannenbaum,
District 15 Alder Designee

Moirra Harrington,
*Madison Board of Park
Commissioners Representative*

Eric Knepp,
Madison Parks Superintendent

Laurel Neverdahl,
Olbrich Garden Club President

Tanya Zastrow, *Olbrich Botanical
Gardens Director*

ADVISORS TO THE BOARD

Fred Anderson

Dennis Birke

Jack Bolz

Jt Covelli

Sandy Dolister

Julie Herfel

Kevin Hess

Jeff Levy

Dale Mathwich

Dan Matson

Mary Phillips

Barbara Tensfeldt

Paul Williams

TABLE OF CONTENTS

Members Get More! p 3

Native Plants. Natural Wonders. p 4-5

Gear Up For The Gardening Season p 6

Virtual Lecture Series: Reimagining Beauty ... p 8

Exact Sciences Staff In The Gardens p 9

Bolz Conservatory 30th Anniversary p 10

A Closer Look At One

Of Olbrich's Orchids p 11

Events At The Gardens p 12-13

Outdoor Gardens Featured Plant p 14

Travel With Olbrich In 2022 p 16

Orchid Escape p 17

Outdoor Gardens' Wish List p 18

Invitation to Dance p 18

Going Green p 19

Tributes & Memorials p 21

Olbrich Partners with Local Non-Profits p 22

Olbrich's Growing Gifts Shop p 24

Letter From the Director



The start of a new year is often a time of reflection. Looking back it is clear we have a lot to be thankful for at Olbrich Botanical Gardens. This past summer, we collaborated with members of the Ho-Chunk nation to create an Indigenous Garden, grew vegetables on a walk-through trellis, and treated guests to milkweed soup. In October, we gathered on the Great Lawn to celebrate the Grand Opening of the new greenhouses, the Frautschi Family Learning Center, the partnership between the City of Madison and the Olbrich Botanical Society, and the generous donors that made the project possible.

The excited voices of schoolchildren filled Olbrich as field trips returned. Along with the schoolchildren, families learned together while attending programs in the Frautschi Learning Center classrooms. Behind-the-scenes, our new greenhouses provided the perfect growing environment for masses of poinsettias, resulting in 10 varieties totaling over 800 plants. Those plants were on display in the Planes, Trains, and Automobiles Holiday Train Show, which came chugging back this December. Not only did we see a return of guests to our outdoor gardens and Bolz Conservatory, we saw guests turn out in RECORD numbers to enjoy this year's GLEAM exhibition. Over 30,000 guests enjoyed GLEAM in 2021!

Once again, our spaces and gardens welcomed guests celebrating life's milestones – weddings, anniversaries, baby showers, and other momentous occasions. We reached a milestone of our own and celebrated the 30th anniversary of the Bolz Conservatory in November. (Missed donating to the Bolz Conservatory Anniversary Campaign? Visit olbrich.org for info!) None of this would be possible without our dedicated staff, and thankfully, in 2021 we were able to fill all vacant positions that were put on hold because of the pandemic.

Looking ahead, 2022 is already shaping up to be an exciting year! The flutters of butterflies and flickers of flames are returning with Blooming Butterflies and Crackle. Tours resume in the gardens including the popular tram tour. Our virtual presence is getting a facelift with a new website debuting in late 2022.

Personally, I am very thankful to be a part of Olbrich Botanical Gardens. I could not be more thrilled to be in the Director role of such a beautiful space and to work with the team of dedicated staff and volunteers. I look forward to welcoming you all to Olbrich Gardens in the New Year.

Take care,

TANYA ZASTROW *Director, Olbrich Botanical Gardens*



Upcoming Member Benefits in 2022

Mark your calendars for these special days when all members receive **20% off** in the Gift Shop!

OPEN HOUSE & IRON POUR WITH FELION STUDIOS

Sat., February 19, 2022

BLOOMING BUTTERFLIES MEMBER PREVIEW

Wed., July 13, 2022

HOLIDAY SHOW MEMBER PREVIEW

Fri., December 2, 2022

Members Get More

Winter in Wisconsin is here, and with it the cold, wind, and snow. The beautiful reds, oranges, and yellows that colored the trees have fallen away, and the plant life lies dormant until spring thaws the ground. Finding fun activities for the whole family can be hard this time of year, especially when all you want to do is curl up under a blanket and try to stay warm. With the Old Farmer's Almanac warning us that this winter could be one of the longest and coldest we've seen in years, don't forget the warm respite that can be found in the Bolz Conservatory!

As an Olbrich member, you receive free access to the Conservatory every day of the year, but you might want to swing by for some extra special days this winter. Throughout the month of February, immerse yourself in an explosion of vibrant blooms during Orchid Escape: Revel in the Rainbow, when hundreds of unique and vividly colored orchids adorn the Conservatory. If you're feeling down from the lack of vitamin D, there's nothing a little stroll through the tropical Bolz Conservatory can't cure!

Ongoing Member Benefits

FREE ADMISSION

into the Bolz Conservatory

20% OFF MOST CLASSES AND WORKSHOPS

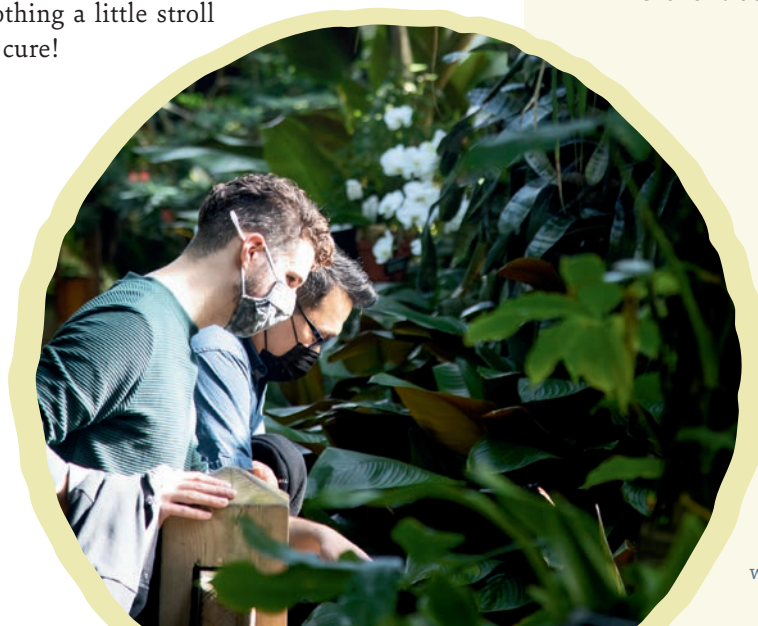
register online at
olbrich.org/education

DAILY DISCOUNTS

in Olbrich's Gift Shop

CHECKOUT PRIVILEGES

in Olbrich's Schumacher Library





NATIVE PLANTS. NATURAL WONDERS.

When you choose a plant to add to your home landscape, its height, color, bloom time, and site requirements are the most common factors to take into consideration. How will it fit in your garden spatially and aesthetically and what does it need to survive?

But, what if a plant's environmental impact was taken into account? What does it contribute to the ecosystem – food for birds, shelter for insects, or soil retention because of its deep roots? Would you still choose that plant after considering those factors?

Thoughtful garden practices help support local ecosystems; it is important that our community embrace native plants that strengthen biological diversity and enhance the land to sustain

all living beings. Native plants are all around us and check off many of those boxes. And, when added to your landscape, they will be both beautiful and beneficial to the environment.

This year, the Gardens' staff is excited to introduce "Native Plants. Natural Wonders." as our programmatic theme for 2022-2023. We'll explore the ways native plants can elevate an ornamental garden (like Olbrich) and help heal our planet. We'll provide resources to learn more about the benefits of native plants and how they contribute to a healthy ecosystem for living things large and small.

We don't want to just talk the talk though – we're taking action too. In the outdoor gardens, we are strengthening our commitment to native plants in our new plantings, in addition

CELEBRATE THE "NATIVE PLANTS. NATURAL WONDERS." OPEN HOUSE

Saturday, February 19, 9 a.m.-4 p.m.



Stroll through Olbrich's new greenhouses and get a sneak peek of the 2022 Spring Flower Show theme.



Purchase breakfast snacks from Batch Bakehouse and coffee from Crescendo.



Enjoy family friendly hands-on activities and take-home projects.



Warm up at Pour'n Yer Heart Out - FeLion Studios' annual community iron pour - hosted on Olbrich's Great Lawn all afternoon!

**Iron Pour anticipated
12-1 p.m.**



to the diverse and abundant native plantings already in place. Of the roughly 6,000 plants distributed through our Plant Sale with the Pros each year, 50-percent are Midwestern native species with an additional 30-percent classified as "nativars." Look for our ready-to-plant "Keystone Species" plug tray garden featuring Midwestern native plants with especially high pollinator potential, and an assortment of Wisconsin grown native trees, including several oak species known to support vast numbers of native insects. Expect to see our existing programs tied together in new ways, along with new programming that encourages community members from all walks of life to participate.

Join us for the official rollout of Olbrich's "Native Plants. Natural Wonders." theme at a special open house on Saturday, February 19, from 9 a.m. to 4 p.m. Olbrich staff and volunteers will be there to welcome you with fun activities including "Pour'n Yer Heart Out," a fiery hot community iron pour hosted by FeLion Studios, a local design/build sculpture studio specializing in cast iron art that combines old techniques with fresh ideas!

We're excited to explore the wonder of native plants with you. Together we will continue to create beautiful and beneficial garden spaces.



Create a custom "scratch tile" to be cast with iron during the pour. (Fee applies, while supplies last.)



Visit Olbrich's Orchid Escape exhibit in the Bolz Conservatory and enjoy live music.

STAY AND PLAY ALL DAY at the Olbrich/Garver Campus

Check out the activities happening at the neighboring Garver Feed Mill on February 19!

8 a.m.–12 p.m.

Dane County Farmers' Late Winter Market

10 a.m.–3 p.m.

Brunch at the Garver Lounge (Reservations recommended)

10:30 a.m. & 11:30 a.m.

Clean Lakes Circus, aerial art performance presented by Beatrix Productions

4–10 p.m.

Cocktails, Ian's Pizza, and live music at the Garver Lounge

Visit garverevents.com/public-events for more information.



GEAR UP FOR THE GARDENING SEASON

Most gardeners can attest to the value of good tools in making garden tasks more efficient and enjoyable, and a few durable investments are worth a lot more than any fancy garden gadget. Olbrich's horticulture staff rounded up a few of our favorite tools so you can get your gardening groove on with new gear!

The ergonomically C-shaped handle of the Radius ergonomic aluminum trowel provides good leverage for digging holes for annuals and perennials. It has the perfect degree of taper to make it effective in tougher dig soils.

As a professional gardener, nothing makes me feel more naked than getting outside and realizing I've forgotten my pruners. Keep your favorite pruners nearby with the Felco 919 leather holster. It is extremely lightweight and practically blends with your body over time; I've used mine nearly daily for 15 years and the leather is torn and scratched in some places and shiny with wear in others, but it still has lots of life left. You'll thank yourself every time you make a quick grab for your pruners and find it right at hand!

With the intense drought we experienced in Madison over the summer, we all spent a lot of time hauling hoses. Hand watering can be a zen-like task, allowing time to study and appreciate garden details. It's a lot harder to enjoy when leaky, ill-fitting valves are spraying icy water in March or November. AM Leonard's durable, leak-proof brass shut-off valves perfectly control water flow and pressure when using watering wands or sprinklers. A dry gardener is a happy gardener!

A good gardening book that feeds the soul and sparks inspiration is always a wonderful gift to pull the Wisconsin gardener through the dreary months of winter. A good winter read that sits on the desk of every horticulturist at Olbrich is Doug Tallamy's Book, *Nature's Best Hope*.

Sleek and stylish, the houseplant guru on your shopping list would love an indoor copper watering can from Gardener's Supply Company. It is both beautiful, with a trendy hammered copper finish, and functional, being the perfect size for watering indoor plants.

This battery-powered blower from Stihl is a prized possession among Olbrich horticulturists and is a perfect gift for the environmentally conscious gardener. The rechargeable battery is interchangeable with all our new battery-powered Stihl tools recently acquired through funding from generous donors Carol and Andy Phelps. Thank you! Check out page 19 for an ode to our other new electric equipment!

Experience the intricate world of insects in 300x zoom with a digital microscope camera. Our Garden Scout volunteers, horticulturists, and visitors have thoroughly enjoyed using this techy little microscope to see what's happening out in the garden. This tool was funded by a Dane County Environmental Grant to support lifelong learning about sustainable, chemical-free gardening, beneficial insects, and all the other little things that run the world! There's a whole ecosystem at work on the backside of a single oak leaf!

OLBRICH HORTICULTURE STAFF

WALKING IN A (COLORFUL) WINTER WONDERLAND



Hamamelis vernalis 'Christmas Cheer'
by Avery Pronschinske



Malus 'Sutyzam' by Dan Schuknecht



Pinus bungeana by Avery Pronschinske



Salix alba ssp. *vitellina* 'Britzensis' by Erin Presley



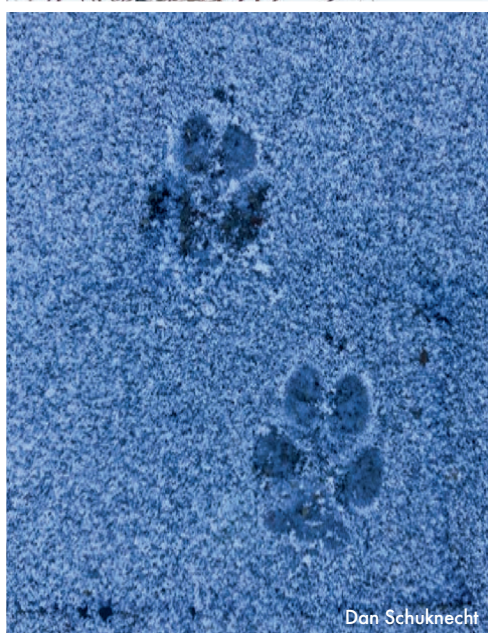
Dan Schuknecht



Cedrus deodora 'Monkinn' and *Physocarpus opulifolius*
'Little Joker' by Dan Schuknecht



Chamaecyparis 'Golden Mop' by Katey Pratt



Dan Schuknecht



Katey Pratt

VIRTUAL LECTURE SERIES: REIMAGINING BEAUTY

Imagine looking beyond initial aesthetics to assess a garden's beauty. What if our valuation of beauty included a garden's ability to support the broader ecosystem? Through working with nature and looking closer at the plant communities, animal communities, and soil organisms in our gardens, we can strengthen biodiversity and increase local ecosystem productivity. Let's reimagine beauty together. Join us for a five-part virtual lecture series to learn how inspiring professionals in the gardening community continue to push the bounds of beauty. Lectures include a 60-minute presentation on ZOOM, followed by a 30-minute Q&A session with the presenter.



Thomas Rainer
Thursday, February 24, 7-8:30 p.m.

Thomas is a registered landscape architect, teacher, and author living in Arlington, Virginia. A leading voice in ecological landscape design, Thomas has designed landscapes for the U.S. Capitol grounds, the Martin Luther King, Jr. Memorial, and The New York Botanical Garden, as well as over 100 gardens from Maine to Florida. Thomas is a specialist in applying innovative planting concepts to create ecologically functional designed landscapes.



Reba Luiken
Thursday, March 24, 7-8:30 p.m.

Reba is the Director of Allen Centennial Garden and an environmental historian. As a professional in public gardens, she is an architect of plant encounters, meeting people where they are, and connecting them with plants in new ways through horticultural storytelling. As a historian, she focuses on the history of the plants and people including things like community gardens, horticultural therapy, and education.



Kelly Norris
Thursday, April 28, 7-8:30 p.m.

Kelly D. Norris is an award-winning author and plantsman whose work has been featured in *The New York Times*, *Better Homes and Gardens*, *Martha Stewart Living*, *Fine Gardening*, *Garden Design*, and in numerous television, radio, and digital media appearances. His passion for planting at the intersections of horticulture and ecology has culminated in a new book *New Naturalism: Designing and Planting a Resilient, Ecologically Vibrant Home Garden*, which had its debut in January 2021 from Cool Springs Press.



Jeff Epping
Thursday, May 26, 7-8:30 p.m.

Jeff Epping is the director of horticulture at Olbrich Botanical Gardens. For over 25 years, Jeff has enjoyed sharing ideas about stylish, attractive gardens that require less maintenance than traditional gardens and put plants at the forefront. Jeff's commitment to sustainable gardening is reflected in Olbrich's award-winning garden designs that showcase the best plants for south-central Wisconsin.

THANK YOU
to our 2022 Virtual Lecture
Series Presenting Sponsor

Barbara Mathis

Register Online at olbrich.org/education/classes.cfm.
\$15/\$12 member per lecture; \$65/\$50 member for the entire series.

Asclepias incarnata



EXACT SCIENCES STAFF IN THE GARDENS

In 2018, Olbrich Botanical Gardens started a partnership with Exact Sciences through their Volunteer Time Off (VTO) program. The goal of their VTO program is to create and support community engagement opportunities for employees that are meaningful, purposeful, and help those in need. All Exact Sciences employees can receive up to 16 hours of paid time off per calendar year to volunteer with an organization that supports the well-being of the community.

Over the past four years, the partnership between the two organizations has grown stronger. Staff from Exact Sciences give their time to Olbrich in two ways. During the gardening season, crews of six to eight staff work with Olbrich horticulturists to mulch, plant, weed, and do whatever needs to get done to maintain beautiful garden beds. For staff who work third shift, they volunteer at GLEAM, Art in a New Light in the evening as Outdoor Hosts. In 2021, six Outdoor Garden Crews provided about 160 service hours, and 20 staff enjoyed hosting guests at GLEAM, giving about 120 hours.

In 2021, Sandi Statz, Senior Vice President for Clinical and Regulatory Affairs at Exact Sciences, joined the Olbrich Botanical Society Board of Directors. With degrees in horticulture and entomology, Sandi is the perfect addition to the already productive partnership between our organizations.

Olbrich appreciates Exact Sciences' corporate support of volunteer service in our community and we're looking forward to continuing our partnership in the future.

Olbrich is one of the most fun and rewarding VTO experiences for staff. It fills up in less than 10 minutes once it's posted online. Our staff are inside during their work day. Olbrich offers us a chance to be outdoors in a beautiful location where we can come back and see our work. It's also a COVID-friendly opportunity since we can physical distance and work outside.

MEGAN MILLIGAN, *Scientist*





BOLZ CONSERVATORY 30TH ANNIVERSARY UPDATE

Campaign Exceeds Fundraising Goal

On November 1, 2021, the tropical Bolz Conservatory celebrated its 30th Anniversary at Olbrich Botanical Gardens. The 10,000-square-foot glass pyramid is named for Adolf C. and Eugenie Mayer Bolz, whose family provided the initial \$1 million gift to launch the \$5 million project. With a mission to conserve and interpret plants native to the world's tropical forests for study, enjoyment, and public benefit, the Bolz Conservatory is home to nearly 700 plants that represent 80 plant families and 500 species and cultivars.

Given the age of the facility, Olbrich identified several projects that required immediate attention. Olbrich set a fundraising goal of \$35,000 for facility repairs and upgrades, with an additional goal of expanding access and outreach efforts, including increased scholarship passes, transportation reimbursement, program development, and multilingual educational materials.

Thanks to the generosity of our supporters and community, Olbrich is proud to share that the Bolz Conservatory 30th Anniversary Campaign raised more than \$80,000 to support initial repairs and upgrades, and make the Bolz Conservatory a more welcoming place for all its visitors! Wow!

Thank you to everyone who made a gift to support the campaign. Because final gifts are still arriving at the time of this publication, Olbrich will recognize all Bolz Conservatory 30th Anniversary Campaign supporters, including our generous donors who sponsored naming opportunities, in our Spring 2022 newsletter. If you haven't yet made a donation and would like to give the Conservatory a belated birthday gift, visit olbrich.org or use the remittance envelope provided in this newsletter.

What's Next for the Bolz Conservatory?

Olbrich will continue to celebrate the Bolz Conservatory's 30th anniversary throughout 2022, and work will begin on the many projects supported through the campaign, including:

- Releveling and repairing 245 feet of paths
- Building a first floor patio for education and visitor seating
- Washing the exterior windows for the first time in its history
- Revamping the Musician's Terrace and Orchid Aerie
- Replacing and upgrading a portion of the lighting infrastructure
- Outreach to community groups and organizations inviting them to enjoy the Bolz for free, including assisting with transportation and interpretative materials if needed

These projects will be an important first step as we continue to care for a heavily used facility with complex systems. We will keep the community and our supporters updated about ongoing needs and how they can help support larger scale capital projects that will be needed in the future.





Warczewiczella amazonica float above silvery *Calathea orbifolia* & *Begonia* 'Sinbad', while *Dendrobium* 'White Lightening' arcs toward *Artocarpus* & palm in the canopy.

A Closer Look at One of Olbrich's Orchids

Warczewiczella amazonica, the Amazonian cochleanthes, hails from shady rainforests at low- to mid-altitudes of the Amazon basin in Brazil, Columbia, and Ecuador. This orchid prefers warm conditions and high humidity – somewhere around 80 percent! Consider that in winter, relative humidity in our heated homes hovers in the 30s.

The thin leaves of this diminutive orchid spread out like a fan. Its flattened pseudobulbs (though some say they don't even have pseudobulbs) lack the water-storing capacity afforded to other sympodial orchids, so consistent moisture is important.

Flower size is large in relation to the plant, attempting a bit of bravado with its otherwise pint-sized stature. A single peduncle from the leaf axil juts out to sport a frilly, shell-shaped lip streaked with purple. Indeed, this plant's old name of cochleanthes means "shell flower" in Greek. Up close, the waxy, white flowers offer whiffs of sweet floral scent reminiscent of candy or rose.

Some say *W. amazonica* offers a potent scent, but there appears to be variability among individual plants. Perhaps Olbrich's orchids are missing the euglossine bees they rely on for pollination. Not that the flowers are doing the bees any favors. Most blooms in the *Warczewiczella* genus use deceit pollination tactics, mimicking the fragrance of nectar-rich flowering vines like clitoria. The orchids basically dupe euglossine bees into a visit. They will brush by the flower's column and pick up pollen, but then back out to emerge without a sugary reward of nectar. Hopefully, they will try it again at another warczewiczella so pollination can occur. Most pollinators are young bees that eventually learn the plant's trick and move on.

The genus pays tribute to 19th-century Lithuanian botanist Josef Warszewicz, a prolific collector and burly-bearded traveler attributed in the scientific names of many tropical plants, to the consternation of many English speakers.

IRENE PADLIN, *Conservatory Orchid Horticulturist*

EVENTS AT THE GARDENS

FEBRUARY

Orchid Escape: Revel in the Rainbow Through February 28

10 a.m.-4 p.m. daily

Escape to the tropics in the Bolz Conservatory and see a special exhibit of blooming orchids.

The Canopy Sessions

Friday, February 4, 5-7 p.m.

Enjoy live music performed in the tropical canopy of the Bolz Conservatory!

\$8 Adult/\$4 Child

Tickets sold online; some walk-up tickets may be available.

Garden & Landscape Expo

Friday, February 11, 12-7 p.m.

Saturday, February 12, 9 a.m.-6 p.m.

Sunday, February 13, 10 a.m.-4 p.m.

Visit Olbrich's booth at Garden & Landscape Expo! Purchase a "new-to-you" gardening book from the Schumacher Library and tell your friends about our half-price membership offer for brand new members. Olbrich horticulturists will also take the stage and give various presentations throughout the weekend. Visit wigardenexpo.com for more information and a full list/schedule of speakers.

Native Plants. Natural Wonders. Open House

Saturday, February 19, 9 a.m.-4 p.m.

You're invited to kick off Olbrich's 2022-2023 theme, "Native Plants. Natural Wonders." with hands-on activities, refreshments, free admission to the Bolz Conservatory, a behind-the-scenes look at Olbrich's greenhouses and more!

FeLion Studios' Pour'n Yer Heart Out Iron Pour

Saturday, February 19, 12-4 p.m.

Artists, students, workshop participants, and professionals of all backgrounds come together with the common goal of creating hundreds of unique art works made by their hands and cast in the spectacular medium of molten iron during the coldest time of year!

MARCH

Conservatory Closed for Annual Maintenance

March 7-18

Large trees and tropical plants that threaten to overgrow the pathways get a trim! The Bolz Conservatory will be closed for annual maintenance, but the outdoor gardens, gift shop, library, and Spring Flower Show will be open.

Olbrich's Online Orchid Sale

Thursday, March 3, 10 a.m.

Fancy an orchid featured at the Orchid Escape exhibit? Select orchids will be offered for sale online only starting March 3. Details at olbrich.org.

Onsite Orchid Pick-ups

Saturday, March 5, 10 a.m.-4 p.m.

Olbrich members enjoy early bird pick-up starting at 8 a.m.

The Canopy Sessions

Friday, March 4, 5-7 p.m.

Enjoy live music performed in the tropical canopy of the Bolz Conservatory!

\$8 Adult/\$4 Child

Tickets sold online; some walk-up tickets may be available.



Spring Flower Show Member Preview

Saturday, March 4, 8-10 a.m.

Members get an exclusive first look at the Spring Flower Show!

Spring Flower Show

March 5-27, 10 a.m.-4 p.m. daily

Meander through an array of blooming spring flowers in an elaborate display in the Atrium. Free for Olbrich members!

Rainforest Rhythms

Saturday, March 19

Performances at 11 a.m. & 1:30 p.m.

Come out of the cold and into the tropics! Enjoy a cultural performance in the Commons and a plant finding activity in the tropical Bolz Conservatory.

Cocktails in the Conservatory

Friday, March 25, 7-11 p.m.

Sip cocktails in the Bolz Conservatory and enjoy the beats of local DJs! \$8 cash at the door, ages 21+ only.

Spring Flower Show Sale

Monday, March 28, 10 a.m.-while supplies last

Select plants from Olbrich's Spring Flower Show will be available for purchase, while supplies last.



CLASSES & WORKSHOPS

FANTASTIC FERNS AND HOW TO GROW THEM

Instructor: Dan Schuknecht, Olbrich Botanical Gardens

Wednesday, February 23, 6-7:30 p.m.

Registration Deadline: February 16
\$20 / \$16 member

THE ULTIMATE CATERPILLAR GARDEN

Instructor: Dan Unruh, Backyard Gardener

Thursday, March 3, 6:30-8:30 p.m.

Registration Deadline: February 24
\$63 / \$50 member

TAI CHI MEDITATION (6 WEEK CLASS)

Instructor: Jody Curley, M.A., Master Certified Instructor

Mondays, March 7-April 11, 6-7 p.m.

Registration Deadline: February 28
\$60 per person

GARDENER'S BOOTCAMP

Instructor: Samara Eisner and Sam Malone, Olbrich Botanical Gardens

Tuesday, March 8, 6-8 p.m.

Registration Deadline: March 1
\$33 / \$27 member

EGGSHELL MOSAIC GOURDS

Sunday, March 20, 1-4 p.m.

Registration Deadline: March 10
\$63 / \$50 member

BENEFITS OF NATIVE PLANTS: GETTING STARTED

Instructor: Jeff Epping, Olbrich Botanical Gardens

Tuesday, March 22, 6-7:30 p.m.

Registration Deadline: March 15
\$20 / \$16 member

10 MISTAKES I MADE IN MY VEGETABLE GARDEN SO YOU DON'T HAVE TO

Instructor: Megan Cain, The Creative Vegetable Gardener

Thursday, March 31, 6:30-8 p.m.

Registration Deadline: March 24
\$35 / \$28 member

CHOCOLATE TASTING AND PAIRED PLANT FLAVORS

Instructor: Maya Cole, Olbrich Botanical Gardens

Saturday, April 2, 1-3 p.m.

Registration Deadline: March 23
\$70 / \$56 member

 Virtual Zoom™ Class



FEATURED PLANT

{ Firebird® Crabapple } *Malus sargentii* 'Select A'



Here at Olbrich, we don't reserve all our best plants for just within the garden fences. Planting beds along Sugar Avenue host one of our favorite crabapples, the Firebird® crab.

This crabapple greets the spring with clear white flowers bursting from blush colored buds in May. Despite the humidity typifying recent Midwestern summers, the disease resistant leaves remain spot-free and deep green through the growing season. As a selection of Sargent crab (*Malus sargentii*) from Johnson's Nursery in nearby Menomonee Falls, Wisconsin, Firebird® is very well suited to our climate here in Madison.

The real show starts late season as the 3/8" fruits ripen to brilliant red, offset by golden foliage in November. The densely clustered fruits are very persistent on the plant, so they do not create any mess on the ground as the leaves drop. We love watching snow, frost, and birds creating a playful show on the trees all winter. Long fruit persistence makes this crabapple a valuable wildlife food source in late winter and early spring when other nutritious seeds and berries are scarce.

Firebird® crab shares the majestic spreading form of its parent, the Sargent crab, and is most frequently available as a tree form. Here at Olbrich, our four Firebird® crabs have been grown as multi-stem shrubs with their wide lower branches intact; each is a specimen in its own right and their loose grouping creates an attractive informal hedge with exceptional multi-season interest.

ERIN PRESLEY, *Olbrich Horticulturist*



Sugar Avenue (the gravel path that runs from the edge of Olbrich's parking lot back to the bike path and Garver Feed Mill)

Common Name:

Firebird® crabapple

Zones: 4 to 7

Size: 15 feet tall and wide

Latin Name:

Malus sargentii 'Select A'

Conditions: Full sun, average garden soil



The Bolz
Conservatory turned
30 in November 2021!
Take a look back in time at the
construction, planting, and
opening of Madison's
tropical paradise!



Travel with Olbrich in 2022!

Director of Horticulture Jeff Epping will be your Guide!



NOVA SCOTIA & PRINCE EDWARD ISLAND

August 14-21, 2022

From rugged cliffs and sandy beaches to wildlife-filled bays and peaceful coves, Nova Scotia's beauty beckons.

Featured on this unique tour:

- **Cabot Trail** - one the world's most scenic drives on Cape Breton Island
- **Peggy's Cove Lighthouse** - a preservation area famed for its picturesque and typically East-Coast profile
- **The Halifax Public Garden** - the oldest Victorian-style garden in North America
- **Hopewell Rocks** - sandstone formations carved by time and tide in the Bay of Fundy
- **Tangled Garden** - five acres of gardens including a flowering labyrinth, plus a shop offering small batch jams, vinegars, oils, and cordials made with fresh herbs from the gardens and fruits from local Annapolis Valley farms
- **Harriet Irving Botanical Gardens** - explore a plant collection divided into nine habitats found in the Acadian Forest Region.
- **Prince Edward Island** - known as "Garden of the Gulf", referring to the pastoral scenery and lush agricultural lands, also home of Anne of Green Gables
- **Vesey's Seed** - offers seasonal bulbs, flower, vegetable, fruit, and herb seeds. Every variety available in the catalog is carefully tested at Vesey's 40-acre research farm.

Price Per Person:

\$3,197 double / \$3,745 single

*Receive free airfare of up to \$500 per person if you book by Feb 28, 2022
(Depart/Return: Halifax, NS)

For more information about either travel opportunity, visit olbrich.org

FLORIADE 2022...AND MORE!

September 1-12, 2022

Held every ten years in the Netherlands, the 2022 Floriade Expo celebrates the theme "Growing Green Cities" with 40 inspiring country presentations, a spectacular greenhouse complex, colorful displays, horticultural experts, and more!

Featured on this unique tour:

- **Rhine River Cruise** - Bingen-Rüdesheimer Fähr- und Schifffahrtsgesellschaft
- **HORTVS Peter Janke's Garden** - Hortvs (Latin for "garden") features ancient oaks and beech trees, a water garden with three natural ponds, and a gravel and woodland garden
- **World-renown Maximilianpark** - a variety of theme gardens, large perennial beds of Piet Oudolf, untouched forest areas, and more!
- **Legendary Westphalian Water Castles** - a string of palatial fortifications mostly surrounded by water protected the dominions of powerful lords in the medieval and Renaissance periods
- **De Herrenhof Gardens** - featuring cottage-type planting - a green oasis full of surprises!
- **Jardin de Wilz Gardens** - artistically laid-out watercourses, generously proportioned terraced ponds, flowerbeds, and stone fields.
- **Grand-Chateau d'Ansembourg Gardens** - one of the famous castles belonging to the Valley of the Seven Castles, featuring lovely stately gardens
- **Hermannshof Weinheim Garden** - established over 200 years ago, this garden cultivates about 2500 taxa arranged in naturalistic plantings and contains a number of notable trees, including specimens of *Platanus orientalis* and *Platanus hispanica* that are over 230 years old!

Price Per Person:

\$4,797 double / \$5,215 single

*Receive free airfare of up to \$500 per person if you book by Feb 28, 2022
(Depart/Return: Halifax, NS)



Orchid Escape: Revel in the Rainbow

Beautiful. Fragrant. Colorful. Exotic. These are just a few words commonly used to describe orchids. Humans have been admiring orchids for thousands of years; in fact, the first recorded mention of “orchids” was around 300 B.C. by Theophrastus, a student of Aristotle. At one time or another, orchids occupied every continent in the world except Antarctica.

Today, with about 30,000 species of orchids in the world and more than 100,000 hybrids and cultivars, orchids are commonplace in botanical gardens, can be found for sale at big box home improvement stores, and are often grown as a long-blooming houseplant. Despite their abundance, humans continue to be enthralled with orchids' sometimes-otherworldly appearance; rarely do visitors leave the Bolz Conservatory without stopping to admire their bright colors and enveloping fragrances.

Orchids from Olbrich's permanent collection, along with additional orchids ordered just for this occasion, will take

center stage in the Bolz Conservatory during Orchid Escape. Hundreds of artfully displayed orchids are sure to beckon visitors to admire their myriad of sizes, shapes, colors, and scents. While strolling amidst the orchids, take a moment to reflect on how the same types of orchids that have evolved over thousands of years and inspired the likes of Aristotle, are just as enthralling to us today.

Orchid Escape is open daily from 10 a.m.-4 p.m. from January 29 to February 28. Admission is \$6 for ages 6 and up and free for Olbrich members. Admission is free for everyone on Wednesdays and Saturdays from 10 a.m. to noon.





OLBRICH BOTANICAL GARDENS' WISH LIST

Our growing public garden has many needs! Here are some ideas on how you can help. For more information, contact Olbrich's Director of Development, Joe Vande Slunt, at 608-246-4583 or jvandeslunt@cityofmadison.com.



LEARNING THE LATEST AND GREATEST

All throughout the Gardens, you'll find a deeply committed team of professionals dedicated to their respective crafts. With more in-person professional conferences returning in 2022, we'd love to send more staff to their respective professional association conferences so they can bring that knowledge and energy back to Olbrich Gardens. Your donation covers registration, flight, hotel, and meals, and brings you everlasting gratitude from an Olbrich staff member.

- \$2,000 / staff member



SAM'S SUNKEN GARDEN SHE-SHED

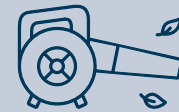
Did you know that Sunken Garden horticulturist Sam Malone is the only Olbrich horticulturist without a supply shed? Not only that, but the Sunken Garden is the furthest garden from the main supply shed, resulting in many unnecessary trips back and forth throughout the day. Help Sam make her work more efficient by building her the shed of her dreams, complete with a relaxing seating area and outdoor furniture. - \$20,000

REPLACE AND UPGRADE OLD OFFICE FURNITURE



Many of our staff are making due with office furniture that is quite vintage - but not in a charming, Mid-Century modern way. Chip in and help make office furniture more accessible and functional for staff: things like replacing worn-out chairs and upgrading wobbly desks.

- 5 donors needed @ \$1,000/each



IT'S ELECTRIC! (BOOGIE WOOGIE, WOOGIE!)

Last year, Olbrich was fortunate to upgrade a significant portion of its gas-powered garden tools to electric. (See page 19 for more information.) We're working on continuing that electric transition. Next on the list: another leaf blower with an extra battery, and a snow blower with an extra battery. - \$2,500



A LABEL MAKER - WITH LASERS?!

Deep in the Garver Cottage lies a Soviet-era laser-engraving printer that has faithfully produced every plant identification tag and staff/volunteer nametag for decades. Its software is no longer supported, and it no longer works well, even if we ask it nicely. Help us retire our retro laser-engraving printer that's past its prime with a shiny, new engraving printer! We'll even make you a sweet sign for your garden as a token of our appreciation. - \$6,000, with free shipping – what a deal!

Invitation to Dance

Dance and music are wonderful means for exploring and learning about different cultures. Vernā Myers says, "Diversity is being invited to the party; inclusion is being asked to dance." Consider this your invitation to dance! Olbrich's Rainforest Rhythms program features authentic performances of dance and music from rainforest regions of the world. Talented artists encourage people to shake, skip, shimmy, and slide their way across cultural boundaries.

In 2022, we are excited to celebrate Haitian culture with a Rainforest Rhythms' performance featuring Afoutayi, Minnesota's foremost Haitian arts and cultural organization. Afoutayi presented an annual festival in Minnesota that developed into a hub for Afro-centric movement and music through collaborations with notable artists from the African and Afro-Caribbean diaspora. Today, Afoutayi hosts residencies, workshops, ceremonies, and lectures in the community to challenge attendees to think and move outside of their familiar habits.

Before or after the performances, stroll through the tropical Bolz Conservatory with a scavenger hunt that guides you to plants native to Haiti. Featured plants include the Calabash tree and eerily named Zombie Palm. Discover more about these trees and other Haitian plants that can be found in Olbrich's Conservatory.

RAINFOREST RHYTHMS

Saturday, March 19

Performances - 11a.m. or 1:30 p.m.

- \$8 General Admission
- \$4 Children (ages 6-12)
- FREE Children (5 & under)

Price includes admission to Conservatory



GOING GREEN: ELECTRIC GARDEN EQUIPMENT

Good for the Environment, Good for the Gardens

Last fall, we were grateful to convert a significant portion of our gas-powered lawn equipment to electric. While this has been a long-term wish of the staff, it was recently made possible thanks to the generosity of Olbrich members and supporters, particularly Carol and Andy Phelps. [Thank you, Carol and Andy!](#)

Why is Olbrich converting its fleet to electric lawn equipment? Quite simply, we're running out of time to make the needed changes to combat climate change, and gas-powered equipment is one of the worst offenders when it comes to emissions and pollution.

For example, according to the California Air Resources Board, using a gas-powered lawn mower for just one hour generates as much pollution as driving a Toyota Camry from Los Angeles to Las Vegas (300 miles) and using a gas-powered leaf blower for one hour generates as much pollution as driving from Los Angeles to Denver (1,100 miles)! That air pollution adds up, which contributes to an estimated 4.2 million deaths per year due to stroke, heart disease, lung cancer, and acute and chronic respiratory diseases, according to the WHO.

To make matters worse, the EPA estimates over 17 million gallons of gas are spilled each year refueling lawn equipment – which is a greater volume than the Exxon Valdez oil spill.

Besides being better for the environment, great progress has been made in performance over the past few years, with electric equipment performing as good as or better than its gas-powered counterparts, according to Consumer Reports (and many satisfied owners). Electric equipment is also significantly quieter than gas-powered equipment, and requires less maintenance.

Look for the electric equipment the next time you visit the Gardens, and expect to hear more about it in our classes, workshops, publications, and tours. This winter, as you consider your next growing season, think about converting to electric equipment. You'll be happy you did, and the environment will, too!



In Memory of Dick Wagner, Community Leader and Olbrich Friend

"We are deeply saddened to learn of the passing of long-time Olbrich friend, Dick Wagner, whose service on the Olbrich Botanical Society Board of Directors spanned three decades. Dick was a champion of Olbrich in the community. Perhaps some of his greatest contributions were behind the scenes, helping the Gardens navigate multiple capital campaigns, strategic plans, and expansion projects - most recently the construction of Olbrich's Frautschi Family Learning Center and greenhouses.



In addition to serving on the OBS Board, Dick was very active in Olbrich's volunteer program, giving more than 2,155 hours of service to the Gardens over his volunteer career, even graciously opening his own garden for Olbrich's Home Garden Tour in 2013.

We join the Madison community in celebrating the life and honoring the memory of our dear friend, who will be greatly missed."

PHILIP BRADBURY,

OBS President on behalf of the OBS Board of Directors

Olbrich's Garden Growers

Olbrich's "Garden Growers" provide generous monthly donations and monthly membership dues contributions for the gardens. Monthly support allows Olbrich Botanical Society to breathe easier, knowing future cash flows are committed from loyal friends and members within Olbrich's community.

GARDEN GROWERS

Anonymous,
Target Corporation Employee Giving

April Collins,
matched by American Family Insurance

Jessica Butler*,
matched by American Family Insurance

Kelsey Guth
Aurora Health Advocate Employee Giving

Paula Bloodsaw*

Renee Rizzo and James Peltier

Richard Paulson and
Frances Barman-Paulson*

Susan Sundquist

Tom Duter

**Indicates monthly dues-paying members.*

Are you interested in joining Olbrich's "Garden Growers?" Contact Donor Engagement Manager, **Jake Immel** at 608-243-0153 or Jimmel@CityOfMadison with questions or to sign up today!



Abutilon 'Biltmore Ball Gown'



Hamamelis virginiana

TRIBUTES & MEMORIAL GIFTS

Tribute Trellis, tribute, and memorial gifts to the Olbrich Botanical Society keep the gardens growing for everyone in our community. **Thank you for these tribute trellis, tribute, and memorial gifts received July 1 – September 30, 2021.**

Olbrich Staff does our best to respect preferred spellings and listings of names.
If you note a correction or have questions, please contact 608-243-0153.

TRIBUTE TRELLIS

HOW 'BOUT - LOVE IT! ♥

TAMMI HANSON

Michael Hanson

LINDY ESTEP - REMARKABLE

Sandra Estep and Gregory Dutch

MARY TEACHER - SMITH FRIEND

Sherrill and Paul Wagner

MOM WAMBACH - ♥ S-W FAMILY

Deb Simon

PATTI - CLIKEMAN

SWEETIE & - DOLLY

Thomas Clikeman

TO MY MOM - SALLY RIP

Kim Macaulay

WE MISS YOU, - NANA GAIL XO

Jen Yakimicki Guimond

In memory of Diann Allsen

Dave and Caren Young
Patricia and James Blair

In memory of Edwina Zola McClary Hilleshiem

Genevieve Kirchman

In memory of Gene Purcell

Ann Schattenberg

In memory of Grace Shaw

Judy and Bob Droust

In memory of James Oliver Hampel

Christine Corrado
Leslie A Hall
Mary De Laney
Susan Vaughn
Rebecca S Baker
Rita Thomas
William and Vicki Klass

In memory of Jane Roeber

Jean and Richard Lottridge

In memory of Janet Kittelsen

Alfred Thomann
James Kittelsen and Deanne White
Ken Kittelsen
Laura and Gary Steuck

In memory of John B Shier

Dayton and Ann Sederquist
Judy Yoss
Noel Favia

In memory of Juanita Rose Ehrke

Janet and Karen Ehrke
Kristopher Frey and Christine Scott Frey

In memory of Kathy Grunewald

Robert Draeger

In memory of Marge Rowley

Carol and Ray Krizmanic

In memory of Mary Ann Doherty

Barry and Deanna Moser
Karen L Duffey
Rachel Palmatier
Terri and Jeff Erickson

In memory of Mildred Brunner

Barbara Boushon
Carmela Parker
Carol McCurry and Peggy Elath
Daniel and Jennifer Masrud
Denise Cliver
Donald and Mary Greuel
Edward and Debra Slotten
Greg and Karla Shallenberger
Janet and Frank Germinaro
Jennifer Soule
Jerome Riley
Jody and Eugene Wicichowski
Larry and Annette Landsness
Mark A and Amy S Terpening
Mike and Sally Miley
Nancy and Daniel Battist
Randal and Cary Hellendbrand
Robert and Susan Hunt

In memory of Nancy Gage

Katherine and Charles Mattison

In memory of Paul Marcus Anderson

Lisa Olson

In memory of Phillip Levy

Ann Miller Coleman
Jacqui and John Shanda
Jeffrey C Levy
Pamela McCloud Smith and Scott Smith
Sandy Dolister

In memory of Tamara Hanson

Audremae Hanson
Mark and Sandra Hanson
Michael Hanson

In memory of Thomas James McClements

Margaret O'Donoghue and Steve Veazie

In memory of Willis "Bill" Long

Cathryn Cofell Mutschler and Peter Mutschler
Bob and Cathy Lonsway
Christopher DeMarco
Chuck Freed
Dan Walker
David and Kim Weiser
David W Hall and Margie Devereaux
Fernando and Carla Alvarado
Ilene Kelfer and Peter Lodde
Jeff Pirtle and The Pirtle Family
Michelle Mader
Pat and Mike Exharos
Sachi Komai
Susan Marshall
Susie Seraphine

TRIBUTES

In honor of David Lowes

Anonymous

In honor of Roberta Sladky's 15 years of service as Garden Director

Julie and Russ Rupert

a matching gift from American Family Insurance

Mike and Sally Miley

Peter Cleven and Joyce Apfel

MEMORIALS

In memory of Andrea Ritland

Corrine Lynch
David and Carolyn Osberg
Steve Schroeder



OLBRICH PARTNERS WITH LOCAL NON-PROFITS

in Training Program to Increase Diversity in the Environmental Sector



August Ball, Founder of Cream City Conservation & Consulting

Olbrich overflows with plant diversity, contributing to sustainable and resilient garden ecosystems. Similarly, we seek to attract a diverse visitorship that reflects the vibrant communities that strengthen the greater Madison area. In addition to welcoming a wide variety of visitors, we also strive to cultivate diversity within our staff, believing that an “inclusive, diverse Olbrich workplace results in a sustainable public garden.”

It is a sad fact that people who are Black, Indigenous, or people of color are grossly underrepresented in environmental organizations. For example, a 2014 study discovered that while 40% of staff and 17% of executives in the *tech* sector were people of color, only 25% of staff and 4% of senior staff in *environmental* foundations identified as people of color. Keep in mind, it is estimated that by 2045, fully 50 percent of the US population will be comprised of people of color.

Increasing diversity in environmental organizations is especially urgent because enormous crises like climate change and environmental injustice disproportionately impact people who are Black, Indigenous and people of color. According to a 2018 report from the Environmental Protection Agency, race (more than class) is the number one indicator of someone’s vulnerability to climate change. Not surprisingly, people of color self-report higher levels of environmental concern than White people surveyed on the same issues.

Olbrich recognizes the profound importance of bringing more people of color into leadership roles in the conservation sector to develop equitable, innovative, practical approaches to the environmental crises we witness daily. But, how exactly do we expand and strategize this important mission right here at OBG?

We are uniquely positioned in early 2022 to participate with other local non-profits, such as the UW-Arboretum and Aldo Leopold Foundation, in a training program to assess current organizational culture and structures and develop concrete strategies to achieve our diversity goals. The program is led by August M. Ball of Milwaukee’s Cream City Conservation. A “self-taught conservationist” with years of experience working on diversity issues in the environmental sector, Ball developed this in-depth program which includes equity audits, inclusion surveys, racial literacy building workshops, and policy review and coaching.

In recognition of the fact that people of color are disproportionately impacted by environmental crises, Cream City’s program is intentionally focused on race and anti-racism. Olbrich staff will complete a culture survey to help understand the differing experiences of our employees across social demographics, and identify areas where we are currently thriving and where we can improve. Cream City then provides a seven week series of interactive workshops for staff on topics including racial equity and environmentalism, foundations of internalized racism, decentering White dominant culture, and recruitment and retention for a diverse and dynamic team.

Throughout the process, we will have the opportunity to collaborate with the other local organizations participating in the program. Cream City’s consultants will also work with our staff on developing concrete strategies to improve the recruitment, participation, and experiences of people of color within our staff. Thereafter, ongoing communication between an Olbrich working group and August Ball will help ensure that our work continues to move forward to a brighter, more diverse future for Olbrich Botanical Gardens.

OLBRICH’S COMMUNITY ENGAGEMENT & INCLUSION WORKING GROUP





Photo by Edwina Kavanaugh



Photo by Brian Allen

FAN PHOTOS

Olbrich's Facebook Fans post great photos of the Gardens and Conservatory year-round. Here are some of our favorites! Post your photos of the Gardens on our Facebook page and they may end up here!

GOT A GREAT SNAPSHOT?

Share it with us on Facebook and you could see it printed here!



Photo by Meteorologist Brian Doogs NBC15



Photo by Hanneke Tanzer Hilliard



Photo by Peter Burke

Olbrich Garden News is published 4 times a year by the Olbrich Botanical Society as a benefit to members.

Olbrich Botanical Gardens is operated as a public-private partnership between the City of Madison Parks Division and the non-profit Olbrich Botanical Society.

MISSION

Olbrich Botanical Gardens enriches life by nourishing and sharing the beauty of the gardens, the joy of gardening, the knowledge of plants, and the diversity of our world.

Olbrich Botanical Gardens is dedicated to the creation, conservation, and interpretation of gardens and plant collections hardy to the American Midwest or native to the world's tropical forests for study, enjoyment, and public benefit.

VISION

Olbrich Botanical Gardens will be a locally treasured and globally renowned source of beauty and education celebrating the importance of plants in a sustainable world.

INCLUSION

Olbrich Botanical Gardens aspires to be a destination where all visitors, volunteers, and staff are valued and feel they belong. With conscious intent and continuous learning, OBG staff, volunteers, and board will address barriers to inclusion through education, operational changes, and partnerships with the community.

ORIGINAL DESIGN

Huston Design

DESIGN, LAYOUT AND PRINTING

American Printing Company

General Information	608-246-4550
Growing Gifts Shop	608-246-4710
Schumacher Library	608-246-5805
Membership	608-246-4724

If you need an interpreter, materials in alternative formats, or other accommodations to access Olbrich Gardens' services, activities, or programs, please contact 608-246-4550 or TDD 608-267-4980. Please do so at least two weeks in advance of the scheduled program so that appropriate arrangements can be made in a timely fashion.

OUTDOOR GARDENS

November - March 10 a.m. - 4 p.m..

BOLZ CONSERVATORY

10 a.m. - 4 p.m. daily

GROWING GIFTS SHOP

10 a.m. - 4 p.m. daily

SCHUMACHER LIBRARY

Wednesdays-Fridays, 10 a.m.-2 p.m.
Open weekends as staffing allows

VISITOR CENTER LOBBY

November - March 10 a.m. - 4 p.m.



visit www.olbrich.org

3330 ATWOOD AVE • MADISON, WI 53704

Phone 608.246.4550 • Events 608.246.4718



/OlbrichBotanicalGardens



/OlbrichGardens



/OlbrichGardens

NONPROFIT ORG
US POSTAGE
PAID
MADISON WI
PERMIT NO 1295

Volume 37 Number 1

Winter 2022 www.olbrich.org



Olbrich's Gift Shop

Open 10 a.m.-4 p.m. daily

