

OLBRICH
GARDEN NEWS

WINTER 2020



PRESIDENT

Julie Rupert

VICE PRESIDENT

Philip Bradbury

SECRETARY

Renee Boyce

TREASURER

Mary Phillips

PAST PRESIDENT

William F. White

DIRECTORS

Alnisa Allgood

Susan Goodwin

Kevin Hess

Dan Lauffer

Erik Lincoln

Laura Peterson

Timothy W. Sherry

R. Richard Wagner

EX OFFICIO

Liz Dannenbaum,
District 15 Alder Designee

Laurel Neverdahl,
Olbrich Garden Club President

Brad Hinkfuss,
District 6 Alder Designee

Roberta Sladky,
Olbrich Botanical Gardens Director

Betty Chewning,
Neighborhood Association Representative

Eric Knapp,
Madison Parks Superintendent

Nancy Ragland,
*Madison Board of Park
Commissioners Representative*

ADVISORY BOARD

Fred Anderson

Dennis P. Birke

Jack Bolz

Jt Covelli

Sandy Dolister

Elizabeth Ogren Erickson

Julie Herfel

Edith Hilliard

Jeff Levy

Janet Loewi

Dale F. Mathwich

Dan Matson

Jerry Minnich

Jennifer Nordlof

Erin Ogden

Tricia Perkins

Emanuel Scarbrough

Michelle Taschek

Barbara L. Tensfeldt

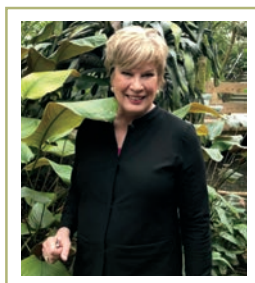
Paul Williams



TABLE OF CONTENTS

Members get More!	p 3	Spring Flower Show	p 15
Celebrate the Elements	p 4	New! Canopy Sessions.....	p 15
Atwood Glade Garden	p 5	Rose Garden Scouts.....	p 16-17
New Greenhouses	p 6-7	Garden Project Planner - Winter Reading ...	p 18
Thank You Volunteers	p 8-10	Plant it on the Patio	p 19
2019 Program Recap.....	p 11	Tributes & Memorial Gifts.....	p 20-21
Events at the Gardens	p 12-13	Wish List.....	p 22
Orchid Escape	p 14	Fan Photos	p 23

LETTER FROM THE DIRECTOR



Thank you all for your support of our Rooted & Growing Capital Campaign and for continuing to make Olbrich Botanical Gardens part of your lives during the past several years. As I write this, construction on the Frautschi Family Learning center is nearly complete. We can't wait for you to see it, and our new greenhouses as well.

The Learning Center and greenhouses wouldn't be a reality without you, our members, donors, volunteers, and community members, and our other partners – the City of Madison Parks Division and the Olbrich Botanical Society. These buildings are the result of a longstanding, mutually beneficial, and successful public/private partnership between the two entities. The City of Madison Parks Division and the Olbrich Botanical Society worked together on this project from conception through completion and the results speak for themselves. As a city government and a non-profit organization working for the common benefit of Olbrich Botanical Gardens, we are more successful together.

Most importantly, this project allows us to further our mission of connecting people with plants. The new greenhouses improve the environmental conditions of our plant collections and provide the space to increase the production of annuals for the outdoor gardens, seasonal shows, and much more. The Frautschi Family Learning Center will provide space for many generations of schoolchildren, families, and adults to learn about the importance of plants and the natural world around them. We need future generations to understand the importance of plants in a sustainable world; our dedicated staff and volunteers will be able to foster those connections for years to come in these beautiful buildings.

We are hosting an Open House on February 15 that will celebrate Olbrich Botanical Gardens' 2020 "Elements" theme. There will be activities for all ages, food, music, and an opportunity to get a "sneak peek" of the buildings. After we move in and get settled, you will all be invited to an official Grand Opening Celebration in June, so watch for more information. At the February Open House, you'll also have the opportunity to watch FeLion Studios' "Pour'n Yer Heart Out" community iron pour event – a unique, artistic event with artists from all over the Midwest. This event will happen in the afternoon on February 15 on the Great Lawn.

We're looking forward to 2020 being a year of restoration -the gardens will be restored in the construction zone, the tram will return, and you'll be able to enjoy our gardens at their peak!

Thanks again for all your support as we complete this incredible project!

ROBERTA SLADKY

Director, Olbrich Botanical Gardens

MEMBERS GET MORE!



Warm Up in the Tropical Bolz Conservatory

In the middle of cold Wisconsin winters, we often find ourselves longing for a warm escape. Well, look no further than the tropical Bolz Conservatory here at Olbrich! The Bolz Conservatory houses a wide variety of plants native to the tropical and sub-tropical regions around the world, and stays between 65 and 80 degrees Fahrenheit year-round – making it the perfect place to visit during the frigid winter. Members enjoy free admission into the Conservatory every day!

Did you know?

If you're itching to see MORE trains, you're in luck – just visit the Mitchell Park Domes in Milwaukee!

Through March 29, Milwaukee's Mitchell Park Horticultural Conservatory (a.k.a. the Domes) will feature the "Attack of the Giant Monsters 2" Train Show! According to their website, "This G-scale model train garden will feature spoofs of your favorite classic giant movie monsters." As an Olbrich member, you receive reciprocal admission benefits at the Domes! If you have any questions about the show, please contact the Domes at 414-257-5608.

ELIZABETH SPRY, *Membership & Development Associate*
608-246-4724 or espry@cityofmadison.com

Upcoming Member Benefits

Spring Flower Show

March 7-22, 10 a.m.-4 p.m.

- Save the date! Member Preview is March 7 from 8-10 a.m.
- FREE admission for members!

Plant Sale With the Pros

May 8, 11 a.m.-5 p.m.

May 9, 9 a.m.-3 p.m.

- FREE Early Bird Shopping for Patron, Benefactor, Angel, Lifetime/Circle, and Legacy Society Members from 9-11 a.m. on May 8
- Members receive a free gift at the sale!

2020 MEMBER

DISCOUNT DAYS GIFT SHOP HOURS

Members receive 20% off in the Growing Gifts Shop

Elements Theme Open House

February 15, 9 a.m.-4 p.m.

Spring Flower Show Member Preview

March 7, 8 a.m.-4 p.m.

Plant Sale with the Pros

May 8, 9 a.m.-4 p.m.

Blooming Butterflies Member Preview

July 15, 10 a.m.-4 p.m.

GLEAM Opening Viewing

August 29, 7:30-10:30 p.m.

Holiday Express Member Preview

December 4, 10 a.m.-6 p.m.





ELEMENTS

It's a new year. A new decade. Time to reset, refresh, and do things differently. We're going back to the basics - considering what's truly important, what we value, and the mark we want to leave (or not leave) on the world.

Olbrich Botanical Gardens connects people with plants, but it's more than that. We celebrate our relationship with the earth, respect our impact on the natural world, educate our community on how they can make a difference, and inspire others to do the same.

This year, the Gardens' staff is excited to introduce ELEMENTS – Earth, Water, Air, Fire -- as our first annual programmatic

theme. The annual theme will be a vehicle for internal collaboration, ensuring that Olbrich's outdoor gardens, tropical conservatory, educational classes and workshops, and the Garden's programs and exhibits, convey our mission of sustainability through the elements.

Expect to see our existing programs tied together in new ways, new programming that encourages community members from all walks of life to participate, and a brand new garden area begin to take form. From the earth in which plants grow, to the air, breathe, and the water that nourishes all life, to the destructive, yet sometimes rejuvenating fires that consume plant life, these forces affect the entire planet – in a continuous cycle of evolution, change, and growth.

Watch for new informational signs in the Outdoor Gardens and Bolz Conservatory that will provide snap-shots on how the elements affect our landscape. These signs will change seasonally, so visit often to continue to learn about the elemental aspects of our garden. Watch for classes

and workshops that allow you to interact with the elements, such as DIY Solar Electric, Hardscaping & Permeable Pavers, and Plants on Plants: The Science of Epiphytes! We're celebrating Earth Day and Arbor Day with a week of activities, including the creation of a new garden along Atwood Avenue for the entire community to enjoy. Read more about the concept of that garden and its connection to the elements on the next page..

Join us for the official roll-out of Olbrich's 2020 ELEMENTS theme at a special open house on Saturday, February 15, from 9 a.m. to 5 p.m. Olbrich staff and volunteers will be there to welcome you with fun activities including "Pour'n Yer Heart Out," a fiery hot community iron pour hosted by FeLion Studios, a local design/build sculpture studio specializing in cast iron art that combines old techniques with fresh ideas!

We're excited to bring you into our world and show you the tremendous ways that plants and the elements impact our daily lives.

CELEBRATE THE ELEMENTS OPEN HOUSE

Saturday, February 15, 9 a.m.-5 p.m.



Groove to tunes from DJ Boyfrriend and other live musicians



Sneak peeks the 2020 Spring Flower Show theme and Olbrich's new Greenhouses and Learning Center



Hands-on elements related activities - make a tiny kite, pot a plant, or create a colorful sun catcher!



Purchase tasty Batch Bakehouse treats and coffee & hot cocoa from Crescendo



FeLion Studios' "Pour'n Yer Heart Out" event will heat up Olbrich's Great Lawn with a live iron pour all afternoon!

Iron Pour anticipated start time - 1 p.m.



Create a custom "scratch tile" to be cast with iron during the pour. (Fee applies, while supplies last.)



Visit Olbrich's new "Orchid Escape" exhibit in the Bolz Conservatory



Do a family-friendly scavenger hunt in the Outdoor Gardens and Bolz Conservatory

OLBRICH'S ATWOOD GLADE GARDEN

2020 marks the 50th anniversary of Earth Day, the planet's largest civic event that strives to protect the earth. To commemorate this momentous occasion, Olbrich is doing something extra special – we are creating a beautiful earth-friendly garden that will celebrate the power of plants and the importance of their role in solving our global climate change crisis.

Olbrich's professional horticulture staff will design the new Atwood Glade Garden and they'll call on other earth-minded community groups to help plant and nurture

the garden. The experience they gain with the Glade Garden will help them create gardens outside of Olbrich and empower others to do the same, greening our little part of the globe one garden at a time.

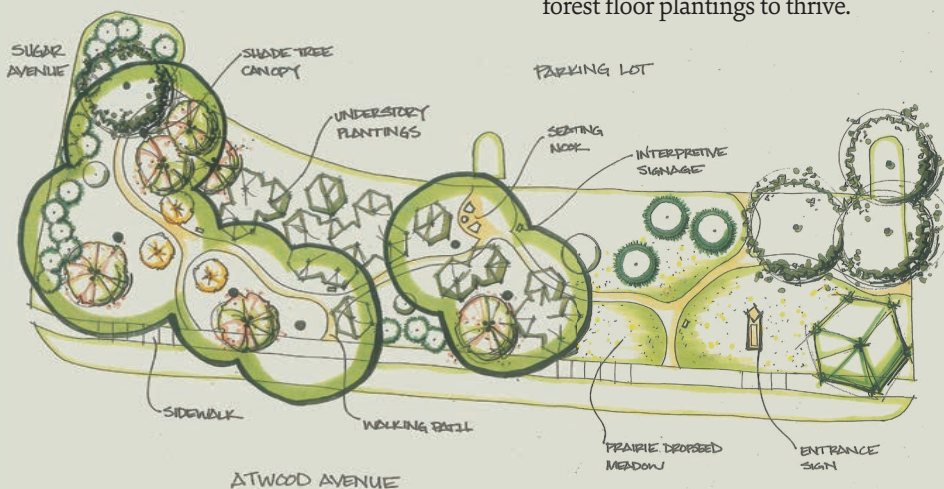
The Glade Garden will be located along Atwood Avenue, visible for all to see as they pass by. The botanical term "glade" means an open green space in a forest with a canopy of trees overhead. In this garden, the tree canopy is made up of old hackberries and younger native oaks, all creating the shady conditions for our new forest floor plantings to thrive.

The floor of the Glade Garden, consisting of shades of lush green foliage and a myriad of flower colors, will be home to a diverse collection of perennials adapted to our climate and conditions. The plants will not only be selected for their beauty, but also for how they contribute to the environment and to our native insects, bees, butterflies, birds and other garden creatures.

The Glade Garden will be planted in stages over the span of three years in conjunction with Olbrich's new yearly programming themes. For the 2020 theme, *Elements*, the Glade Garden will relate the four classical elements to a physical garden space. Garden signage will help explain these sometimes-complex relationships between plants and the elements, such as photosynthesis - the process in which green plants use sunlight to synthesize foods from carbon dioxide and water.

Our little glade garden will hopefully inspire the creation of many others in our community with each doing their part as we work together to address the effects of climate change.

JEFF EPPING, *Director of Horticulture*



WHERE SHOULD I PARK?

Exciting developments are happening all around Olbrich Gardens in our eastside neighborhood! Olbrich's new Frautschi Family Learning Center creates a fresh space for the Gardens to expand our educational programming and collaborations with other organizations. From the Olbrich Biergarten to the restoration of the Garver Feed Mill there are many new opportunities for the community to gather and share common interests.

With new businesses to support, more community events/programs happening in the area, and limited public parking options, visitors should plan ahead regarding the transportation and parking options available when coming to the Gardens.

During the Gardens' larger programs, Park Rangers will help direct traffic, monitor the capacity of the lot, and assist our visitors by providing information on alternative parking options. The Gardens' staff is working with our neighborhood alders, the City's Traffic and Engineering Division, and the Madison Parks Division to closely monitor how the public parking lot near the Gardens is best utilized in 2020.

Questions, concerns, or suggestions regarding parking can be sent to olbrichinformation@cityofmadison.com. Olbrich's staff will direct this feedback to the change makers who have the ability to improve or expand public parking options.

WHAT ARE MY OTHER OPTIONS?

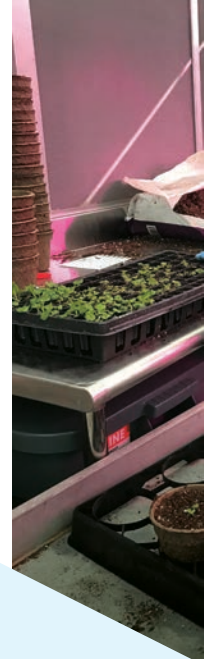
- Olbrich has 12 fully accessible parking spaces near the main building entrance.
- Check out the alternative parking options map on the Gardens' website before your next visit. Have a plan for where you will park if the public parking lot closest to the Gardens is full. There are:
 - 350 parking spaces (street and parking lots) within 0.3 miles of the Gardens
 - 115 spaces within 0.5 miles of the Gardens, all within Olbrich Park
- Plan to carpool!
- Take an Uber, Lyft, or taxi. (Use code ELEMENTS for \$2 off a ride to the open house when booked online with Green Cab!)
- Take a Madison Metro bus. On weekdays, Routes 3, 37 and 38 drop off on Atwood Avenue, right in front of the Gardens. On weekends, the Route 7 bus will drop you off nearby - just a short 6 minute walk from the Gardens.
- Utilize the Capital City Bike Trail to bike to the Gardens or for easy access when walking from alternative parking options.



Hundreds of colorful orchids grow in the two Orchid Greenhouses.



Coleus cuttings and primula plants grow in the Production Greenhouse.



NEW GREENHOUSES

Peek inside the new greenhouses at the Elements Open House on February 15. (Details on p. 5)

Christmas came early this year for Olbrich's conservatory and greenhouse staff! After 15 months of traveling offsite to care for the conservatory's tropical and orchid collection, we took occupancy of Olbrich's new greenhouses in early December. Outfitted with all the bells and whistles you would expect in a brand new state-of-the-art greenhouse, we are thrilled to begin planning for future programming and plant production needs.

While the new greenhouses are nearly the same in square footage as the old ones (11,200 sq. feet vs 10,000 sq. feet), we expect to be able to grow at least 30% more plants due to more efficient use of space and rolling benches throughout. Individual greenhouses were reconfigured to provide more efficient benching and additional growing space for Olbrich's orchid collection. The new greenhouses moved further from the building to eliminate shading from the conservatory and head house.

PRODUCTION GREENHOUSE

Divided into four growing areas, the production house is the largest of all the growing houses. At 4,900 sq. feet, this space can be divided down the middle into two separate growing areas with separate temperature, humidity, and lighting conditions. Amanda Dix, who leads Olbrich's plant production efforts, uses this to her advantage when growing spring and summer crops that need different day and night temperatures. This partition also works with additional blackout cloth around the perimeter of half of the production house to create a light-free environment, which is critical to the success of flowering poinsettias. In this new space, with all its bells and whistles, we'll continue to produce excellent quality annuals and perennials for the outdoor gardens, holiday, and spring flower shows, as well as new and exciting plant sales.

At night, you'll likely notice a pinkish-purple hue emitting from the production greenhouse - these are the new LED grow lights. With a spectrum of light designed specifically for plant growth, these lights are at the cutting-edge in greenhouse growing. As LED lights, they consume a lot less power than the more traditional, high-pressure sodium fixtures you see in the rest of the greenhouse spaces. Another new feature in the production house are dedicated seed germination and plant propagation benches, outfitted with a dedicated lighting zone, bench-top heat, and bench-top mist system.

ORCHID GREENHOUSES

Olbrich's orchid collection will live in idyllic conditions in two different growing spaces. The first (and larger) orchid house provides ideal conditions for intermediate orchids - the ones that grow in tropical rainforest regions around the world. The smaller orchid house contains our cool orchids - those that grow in cooler, mountainous cloud-forest settings. When the cooling pads aren't being used to lower the temperature in the orchid rooms, a stainless steel fog system will add micron scale fog droplets into the air to increase humidity. This new fog system is able to pump out fog particles between 5-15 micron. That translates to fog particles the size of red blood cells (5 micron)! For comparison, a human hair has a diameter of 80 micron.

Both spaces have hanging bars and wall mesh for the many mounted and hanging orchid species within our collection. Shade cloths that allow for different percentages of filtered light were chosen based on the types of orchids in each house. The shade cloth system works with Olbrich's Wadsworth weather station, and the HPS sodium lights to deliver specifically calculated day lengths and day light intervals. A section of shade cloth is deployed when light sensors hit preset thresholds. In addition, lights turn on they are needed to reach a certain level of accumulated moles (a measurement of light).



Greenhouse Volunteer Rita Harris



The Tropical Greenhouse has rolling benches and open space for large, tall plants.

GREENHOUSE CLASSES



The Production Greenhouse LED grow lights emit a bright pink/purple hue, especially visible at night.

TROPICAL GREENHOUSE

Lastly, the tropical house takes up the remaining 2,450 square feet of dedicated growing space. Designed to supplement the conservatory plantings, this space includes rolling benches and open floor space to accommodate larger plants. No detail was overlooked, as even the doors into the greenhouse and tropical house are over 10 feet tall to create easy transport of larger specimens to and from the conservatory. In-floor radiant heat throughout all the greenhouses creates even heating and the taller ceilings create increased air volume for more consistent temperature and humidity control. Even the corridor between the individual houses has laminated glass overhead to keep temperatures lower so staff can work more easily in the heat of summer. The corridor provides access to the Wadsworth climate control system through a mounted touchpad. Additional workbenches in the corridor are close in proximity to the plant collections.

It's safe to say that Olbrich's new greenhouses will be used for many years to come!

COLTEN BLACKBURN, *Conservatory Curator*

Orchids For Beginners

Monday, February 24, 6-8 p.m.

Registration Deadline: February 14

Do you want to take your first step into the mysterious world of orchids, but don't know where to start? Learn basic orchid characteristics, growing conditions, re-potting techniques, fertilizer needs, and more! \$18 / \$14 member

Plant Parenting: Raising Tropicals at Home

Monday, March 23, 6-8 p.m.

Registration deadline: March 13

Learn the basics of houseplant care and strategies to encourage seasonal growth, plus a few troubleshooting tips. Then, pot up a tidy tropical plant to take home. Ages 13 & up. \$35 / \$28 member

From Start to Finish: Greenhouse Plant Production

Sunday, April 19, 1:30-3 p.m.

Registration Deadline: April 9

More than 25,000 plants are grown in Olbrich's greenhouses each year! Take an exclusive tour of the new greenhouses, and learn about greenhouse plant production. \$17 / \$13 member

Houseplant Magic: Plant Propagation at Home

Monday, April 20, 6-8 p.m.

Registration deadline: April 10

Discover the "magic" behind multiplying your plants! Learn the basic techniques of propagating plants in this hands-on workshop and leave with a propagated plant of your own. \$43 / \$35 member

Plants On Plants: The Science Of Epiphytes

Monday, May 4, 6-8 p.m.

Registration Deadline: April 24

The word epiphyte means "on plants" and describes many of our favorite tropical plants. Explore Olbrich's permanent collection while learning about these fascinating plants, how to care for them at home, and various styling tips! \$17 / \$13 member



Holiday Show Volunteers Swe Sainath & Cindy Schultz

Gardeners Samara Eisner, Pat Hackworthy, David & Gay Huenink, Peggy Hayman & Wayne Hanson

Greeters Jean Sheild & Nancy Braem

We Appreciate Olbrich Volunteers!

Volunteers are an important ingredient in the success of Olbrich Botanical Gardens. In measuring their importance, it is natural to focus on the labor they give—more than 27,000 hours annually from about 600 volunteers who help with gardening, visitor education, special events, visitor center functions, and OBS board leadership. While the numbers are impressive, Olbrich's volunteers contribute MUCH MORE!! Volunteers bring unique knowledge and skills. Volunteers connect the Gardens to the community. Volunteers give a human touch. Volunteers bring a fresh and broader point of view. Volunteers teach staff as they work together. Volunteers become Olbrich advocates. And, staff agrees that volunteers add an immeasurable degree of fun to the Gardens! Many thanks to all those who volunteer at Olbrich. You are a vital ingredient here—Olbrich without volunteers would be like a lake without water or forest without trees. And, volunteers say they get back more than they give—we don't even try to measure that!

GROUPS

Edgewood High School
Eenhoorn Managed
Apartment Community
Exact Sciences Laboratories
Fiskars Brands
Goodman Community
Center Seed to Table
Program
Ho Chunk Gaming
Madison
Madison Herb Society
RSVP of Dane County
UW Credit Union
WI Garden Railway
Society

INDIVIDUALS

Aaberg, Janet
Ace, Dee
Adams, Maureen
Adrianson, Tim
Alberti, Connie
Allbaugh, Bonnie
Allbaugh, Stu
Allgood, Alnisa
Allsen, Diann
Alswager-Klein, Renae
Amacker, Judy
Anderson, Anne
Anderson, Carolyn

Anderson, Fred
Anderson, Maren
Anderson, Nancy
Anderson, Rachel
Apfel, Joyce
Arms-Johnson, Helen
Arntz, Barb
Astrozo, Juan
Atkinson, Rose
Bade, Winnie
Baggs, Mary Ann
Bailey, Karen
Baldwin, Peggy
Bangert, Sue
Barlow, Lauren
Barmore, Aleta
Barmore, Duane
Barthel, Susan
Bassalat, Ibrahim
Bauer, Becky
Baugher, Jayne
Beale, Yvonne
Beasley, Pen
Beduhn, Deb
Beduhn, Don
Beecher, Eugenia
Beeler, Christina
Beglinger, Stephen
Beglinger, Sue
Behling, Pat

Bendt, Lynne
Bethke, Karl
Birke, Dennis
Birrenkott, Val
Bisbee, Joyce
Blakeslee, Jan
Boehnen, Jean
Bohrod, Emma
Boll, Joan
Bolser, Mel
Bolz, Jack
Borchardt, Kathy
Borders, Barbara
Bork, Anne
Borland, Marilyn
Boyce, Renee
Bradbury, Philip
Braem, Nancy
Brennan, Mary
Breun, Jane
Breun, Karen
Brignone, Jean
Brindley, Zoe
Brown, Cindy
Brown, Pauline
Browning, Hildy
Bruley, Lynne
Buckingham, Emily
Buehner, Ginger
Bull, Ron

Burke, Jane
Burney, Sharyn
Burton, Nancy
Burzinski, Gwen
Butler, Ruth
Bylsma, Chris
Cannon, John
Canty, Janet
Carlson, Beth
Carpenter, Sherry
Cartwright, Pat
Case, Gary
Case, Lynn
Castelnuovo, Sheri
Castle, Karol
Chambers, Diane
Chandler, Mary
Chapman, Mary
Chewning, Betty
Chiesa, Robert
Christopher, Louise
Clary, Mary
Cleven, Peter
Coder, Michelle
Coel, Cameron
Collins, Ash
Considine, Jane
Contreras, Silviano
Cook, Liz
Coomber, Sue

Coppens, Matt
Corvinus, Celestia
Covelli, Jt
Cramer, Jane
Crampton, JoAnn
Crandall, Judy
Crary, Eldonna
Crassweller, Nancy
Crenshaw, Connie
Crofts, BreeAnn
Crossen, Molly
Cummings, Nell
Curliss, Jennifer
Curry, Marijane
Dain, Tammy
Daughterity, Gayle
Davis, Phyllis
Dean, Marilyn
Deer, Nancy
DeFore, Kathy
DePaul, Roxanne
Derse Phillips, Susan
Desmidt, Deb
DeVault, Terry
DeWitt, Vicki
Diebaren, Amy
Di Iorio, Carla
Di Iorio, Mike
Dodge, Nancy
Dolister, Sandy

Doll, Marcia	Goeres, Susan	Hoium, Adele	Knox, Kathy	Massey, DeAnne
Dupuis, Rita	Gokey, Elise	Howting, Chuck	Knudtson, Linda	Matano, Al
Durley, Judith	Golden, Jeannette	Howting, Libby	Konieczny, Beverly	Mather, John
Dutcher, Kathy	Goodwin, Susan	Huber, Steve	Konieczny, Dennis	Mathis, Barbara
Egan, Rachel	Grabia, Susan	Hubler, Terre	Koschmann, Cindy	Mathwich, Dale
Ela, Judy	Graefe, Goetz	Huenink, David	Krause, Meghan	Mathwich, Lila Ann
Ellestad, Mary	Graf, Sarah	Huenink, Gay	Krone, Muriel	Matson, Dan
Emerson, Kent	Gregg, Aaron	Hyden, Paul	Kubly, Barb	Mattison, Mauretta
Endres, Jean	Grenquist, Kelly	Hylland, Jean	Kucken, Deb	Maund, Kyoko
Erickson, Elizabeth	Griskavich, Bonnie	Ihlenfeldt, Kay	Kuhr, Cindy	Maurer, Minda
Erikson, Mary	Grosz, Linda	Imsland, Rachel	Kulke, Bonnie	May, Allen
Erwin, Jackie	Gruber, Ryne	Intlekofer, Susan	Kulke, Howard	McCormick, Teri
Estep, Sandi	Gunderson, Karen	Irvin, Barb	Kuntz, Marcia	McCrary, Kim
Ewing, Garth	Gurke, Deb	Jacobson, Lynn	LaFlash, Jane	McDonald, Alyssa
Fahrbach, Ev	Hackworthy, Pat	Jacobson, Nancy	Laird, Karen	McDonald, Dennis
Fahrni, Monica	Hagen, Janet	Jakab, Julie	Lamphear, Maggie	McDonald, Ginnell
Fang, Frank	Hager, Alleen	Jamison, Karen	Langreck, Heath	McElrone, Connie
Farrell, Samantha	Haidinger, Shirley	Janokski, Elizabeth	Larsen, Marlette	McKinney, Betsey
Faust, Audrey	Hallow, Abby	Jarreau, Jada	Larson, Mary	McLaughlin, Meg
Feit, Gwen	Hamel, Mary	Jenkins, Angela	Lauffer, Susan	McShane, Maureen
Fenton, Adelaide	Hammes, Lana	Job, Jecica	Lawrence, Joan	McWhirter, Kate
Ferrero, Kathleen	Hansell, Vicki	Johnson, Anita	Lawson, Ilene	Mehl, Marylynne
Fields, Leslie	Hanson, Wayne	Johnson, Anitra	Leary, Sheila	Mertens, Diane
Fix, Mary Ann	Harper, Chris	Johnson, Peggy	Lee, Norm	Michaelis, Pete
Fleming, Christine	Harris, Rita	Johnson, Quanda	Lefeber, Sue	Milis, Judy
Flynn, Joan	Harrison, Randy	Joranlien, Alan	Lehnertz, Linda	Millard, Kristine
Forcier, Maya	Hatleberg, Jill	Kalkopf, Vicki	Lehnertz, Myrtle	Miller, Dorilee
Forcier, Noah	Hayden, Paul	Kalson, John	Lemke, Cheri	Miller, Margaret
Ford, Emily	Hayman, Peggy	Kane, Roberta	Lemke, Dave	Minnich, Jerry
Ford, Milton	Hefferan, Jenny	Kanter, Joanie	Lemley, Sam	Mitchell, Barbara
Ford, Paul	Heil, Judy	Kar, Swati	Levy, Jeffrey	Mohs, Nancy
Fowler, Beverly	Henert, Ellen	Kastl, John	Lickel, Pam	Monson, Julie
Frank, Briana	Henert, Marty	Kaufman, Vickie	Lieteau, Sylvia	Moore, Emma
Freeman, Janet	Henry, Joel	Kaufman, Ginny	Lincoln, Erik	Morrison, Dave
Freemon, Leah	Herbst, John	Keehn, Jamie	Link, Laurel	Mucha, Michael
Freiman, Donna	Herfel, Julie	Keim, Sue	Lobenstein, Darlene	Munson, Ann
Fritsch, John	Hering, Danna	Kelley, Bob	Loewi, Janet	Murray, Aleta
Fuhrman, Ann	Herman, Marsha	Kelley, Ronna	Lopez, Consuelo	Nagaraj, Kailas
Gahlman, Jane	Herrick, Kathleen	Kelly, DeAnn	Louther, Julie	Ndour, Gabe
Gallagher, Mary	Herrin, Katherine	Kelly, Judy	Lowman, Marilee	Ndour, Joseph
Gardenier, Keith	Hess, Ellen	Kelly, Sally	Luchterhand, Randy	Nehmer, Maxine
Garner, Rosa	Hess, Kevin	Keyes Rybeck, Suzanne	Ludwig, Lois	Nehmer, Shawn
Gebauer, David	Hessefort, Joyce	Kiehl, George	Luedtke, Kathy	Nelson, Donna
Gerner, Marlene	Hilgers, Sandy	Kielstrup, Becky	Luetke, Suzanne	Nelson, Kathy
Giesfeldt, Debbie	Hill, Tamara	Kinar, Jan	Mace, Margo	Nelson, Keith
Giesfeldt, Pat	Hilliard, Edith	Kinar, John	Mackie, Irene	Nett, Barb
Gilbertson, Barb	Hinkel, Sara	King, Mike	Mackie, Russ	Neuman, Larry
Gillen, Carol	Hinkfuss, Brad	Kirsop, Patrick	Magdalena, Donna	Neverdahl, Laurel
Gillette, Chris	Hirsch, Jackie	Klasinski, Barb	Mangan, Mary	Newman, Connie
Gillette, Vania	Hoekman, Nancy	Klein, David	Martell, Carol	Norquist, Chad
Glassford, Peggy	Hoffman, JoAnn	Kleinheinz, Rosemary	Marten, Barbara	Norris, Arlene
Gleason, Sally	Hoffman, Les	Kleinheinz, Tom	Martin, Ann	O'Kroley, Sue
Gluth, Richie	Hoffman, Rick	Knight, Betty Lou	Martin, Patrick	O'Neal, Stephanie
Godfrey, Beth	Hoffmann, Loren	Knight, Betsy	Martin, Penny	Oberer, Mary



Library Volunteer Laurel Sukup



Exact Sciences Gardeners



OBS Board Members Jt Covelli & Erik Lincoln

Ogden, Erin
 Oliver, Susanne
 Paasch, Fred
 Paasch, Lynda
 Park, Barbara
 Parzych, Cheryl
 Passineau, Bob
 Patrick, Judy
 Patterson, Noah
 Payne, Terry
 Penfield, Sue
 Penisten, Mark
 Pennoyer, Kathy
 Peotter, Marcia
 Perkins, Tricia
 Peters, Barb
 Peterson, Coralee
 Peterson, Laura
 Peterson, Pam
 Peterson, Phyllis
 Pfranku, Karen
 Phillips, Diane
 Phillips, Mary
 Pings, Martha
 Pinkerton, Mary
 Pirkel, Marian
 Pohl, Joyce
 Potter, Tim
 Powelka, Diane
 Pratt, Sean
 Prazak, Dugney
 Prazak, Joe
 Premo, Barb
 Preston, Marge
 Prochnow, Opal
 Prokop, Matth
 Quandt, Nicole
 Quinn, Chris
 Radmer, Laura
 Ragland, Laura
 Ragland, Nancy
 Rankin, Kitty

Rath, Susan
 Redman, Kristin
 Reed-Passineau, Char
 Reimherr, Karen
 Reisinger, Anastasia
 Rheame, Richie
 Rickey, Carol
 Riehl, Lisa
 Riese, Karen
 Riggie, Enid
 Riphahn, Kathy
 Roark, Jean
 Robertson, Laurie
 Robus, Clint
 Roden, Bob
 Rodgers-Rhyme, Anne
 Rodini, Eleanor
 Rohde, Carlene
 Root, Penny
 Rouleau, Jane
 Rubens, Joan
 Rupert, Julie
 Russomanno, LaVerne
 Saari, Bonnie
 Sabnis, Brittany
 Sadowski, Maria
 Sainath, Swetha
 Sanders, John
 Scarbrough, Manny
 Scharkey, Diane
 Scherf, Penny
 Scheuerman, Jim
 Scheuerman, Suzanne
 Schlapbach, Errin
 Schlapia, Debbie
 Schlingen, Kathy
 Schluenz, Beverly
 Schneider, Wendy
 Schomisch, Jean
 Schuebel, Ellen
 Schultz, Cindy
 Schultz, Nancy

Schultz, Vicki
 Schweitzer, Cheri
 Scorgie, Jim
 Scriver, Shirley
 Seeley, Theresa
 Sennhenn, Jan
 Shaft, Sherry
 Shaw, Cynthia
 Sheild, Jean
 Sherman, Daryl
 Sherry, Jill
 Sherry, Tim
 Sieker, Marie
 Sielaff, Karen
 Simpson, Jen
 Sina, Chris
 Skibba, Rosie
 Sloan, Nancy
 Smith, Benjamin
 Smith, Mark
 Solomon, Sam
 Solterra, Gabriele
 Somers, Eileen
 Songhurst, Sherry
 Soule, Jen
 Sowaske, Ann
 Spann, Cathy
 Spicer, Tommy
 Stachoviak, Sue
 Stanford, Randy
 Stedman, Gini
 Steinhauer, Ellen
 Stenback, Rosemary
 Stenzel, Sue
 Stenzel, Tim
 Stockland, Patrick
 Stratman, Georgene
 Streckert, Nancy
 Strome, Therese
 Stull, Mary
 Sukup, Laurel
 Sundquist, Susan

Sweeney, Charlene
 Sweeney, Deb
 Taschek, Michelle
 Taylor, Jeff
 Taylor, Mary
 Tensfeldt, Barb
 Theisen, Andrea
 Thies, Reta
 Thompson, Audrey
 Thompson, Connie
 Thompson, Linda
 Thousand, Denise
 Tillman, Pat
 Tobakos, Beth
 Tobie, Michelle
 Townsend, Alison
 Trivedi, Amit
 Trivedi, Parul
 True, Betsy
 Tubbs, Hannah
 Tudor, Tracie
 Turk, Myron
 Tyksinski, Karleen
 Tyne, Mary Lou
 Ulery, Judy
 Umstead, Deb
 Van Blarcom, Judy
 Vandrell, Donna
 Van Handel, Margie
 Van Susteren, Catherine
 Varnell, Jill
 Varner, Diana
 Vidlak, Nancy
 Vierthaler, Laurie
 Voeck, Cyndi
 Wagner, Greg
 Wagner, Dick
 Waldman, John
 Waldman, Lila
 Walker, Devin
 Walker, Holly
 Wanek, Jan

Warren, Dana
 Watson, Pat
 Weesner, Claire
 Wehn, Jim
 Wehn, Lynn
 Weidert, Darwin
 Weiland, Marge
 Welch, Linda
 Wells, Jenny
 Werner, Shahla
 Weyer, Brenda
 Weyer, Gene
 White, Bobbi
 White, Bill
 White, Jeffery
 Wiebrecht-Searer, Cathi
 Wieczorek, Pat
 Wiesbrock, Lucy
 Wilk, Marybeth
 Wilkey, Carrie
 Williams, Paul
 Winder, Susan
 Winkler, Bruce
 Wirth, Margaret
 Wirtz, Pat
 Wolf, Dick
 Wolfe, Ann
 Wolff, Judy
 Yahn, Marcia
 Younger, Darlene
 Zanck, Janet
 Zeigler, Eric
 Zimmerman, Jan
 Zinda, Jane
 Zindars, Sharon
 Zins, Mary
 Zirkle, Amelia
 Zweifel, Zach

2019 PROGRAM RECAP

Olbrich Botanical Gardens connects people with plants, but it's more than that. We celebrate our relationship with the earth, respect our impact on the natural world, educate our community on how to make a difference, and inspire others to do the same.

The Gardens offer a variety of programs, exhibitions, and educational opportunities to serve the community and fulfill our mission. Here are some highlights from 2019!



EDUCATION



3,282 ADULTS

took part in 180 classes and workshops



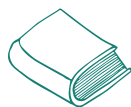
9,854 CHILDREN & CARETAKERS

took part in Olbrich's youth and family programs, including 4,060 students, teachers, and chaperones as part of our K-5 Explorer School Programs



1,625 POUNDS OF ORGANIC PRODUCE

were harvested from the Gardens and donated to local food pantries



3,676 ADULTS AND CHILDREN VISITED THE SCHUMACHER LIBRARY,

a wonderful community resource staffed by a professional horticultural librarian and volunteer master gardeners

EXHIBITIONS



THE 20TH ANNIVERSARY OF BLOOMING BUTTERFLIES

welcomed more than 24,000 visitors, educating the public about the lifecycle of the butterfly and conservation efforts



5,500 visitors soaked in the sun and sounds of the Summer Concert Series



GLEAM: ART IN A NEW LIGHT reached new heights in its 5th year, thanks to eight stunning outdoor light exhibits, and almost 17,000 awe-struck attendees



More than **800** enjoyed the inaugural Summer Breeze programs, kicking off summer with games, live music, and local food

Overall, more than 92,000 members of our community attended Olbrich's programs, exhibitions, and educational opportunities in 2019. With the completion of the new greenhouses and Frautschi Family Learning Center, 2020 promises to be a great year at the Gardens!

To Olbrich's 600+ volunteers, 11,000+ card-carrying Botanical Society members, donors, partners, and program participants...

THANK YOU! You make these programs possible.



THE CANOPY SESSIONS

Fridays, February 7, March 6 & April 3, 5-7 p.m.

SPRING FLOWER SHOW

March 7-22, 10 a.m.-4 p.m. daily

EVENTS AT THE GARDENS

FEBRUARY

Orchid Escape 📍

February 1-29, 10 a.m.-4 p.m. daily

Escape to the tropics in the Bolz Conservatory and see a special exhibit of blooming orchids featuring the elements: earth, water, air, and fire.

Garden & Landscape Expo 📍 at Alliant Energy Center

Friday, February 7, 12-7 p.m.

Saturday, February 8, 9 a.m.-6 p.m.

Sunday, February 9, 10 a.m.-4 p.m.

Visit Olbrich's booth at Garden Expo! Olbrich Horticulturalists will be on hand to answer your gardening questions.

The Canopy Sessions 📍

Friday, February 7, 5-7 p.m.

NEW! - Enjoy live music performed from the tropical canopy of the Bolz Conservatory! \$5 admission at the door.

Rainforest Rhythms 📍

Saturday, February 8

Performances at 10:30 a.m. & 1:30 p.m.

Come out of the cold and into the tropics! Enjoy a cultural performance and a plant finding activity in the tropical Bolz Conservatory.

Garden to Glass: Totally Tropical 📍

Friday, February 14, 6-7:30 p.m.

Discover the plants, stories, and people that make the tropical Bolz Conservatory one of Madison's most iconic places! This sensory experience includes a signature cocktail.

Elements Open House

Saturday, February 15, 9 a.m.-5 p.m.

You're invited to experience the elements with Olbrich this year! We're kicking off a year of programming related to earth, water, air, and fire with hands-on activities, a sneak peek of the Spring Show, music, and more! Plus - Felion Studios' "Pour'n Yer Heart Out" event will be heating up the Great Lawn in the afternoon! Anticipated start time - 1 p.m.

Fine Art & Craft Sale

by the Madison Weavers Guild

Saturday & Sunday, February 22 & 23,

10 a.m.-4 p.m.

Local and Midwest artists offer unique, hand-crafted work on display and for sale including: fiber, pottery, jewelry, painting, pastel & oil, wood, art glass, felt, wire tree sculptures, mixed media, woodblock prints, drawing/printmaking, lamps, wearables, purses, baskets, home furnishings, and more.

Cocktails in the Conservatory 📍

Friday, February 28, 7-11 p.m.

Stroll through Olbrich's Bolz Conservatory, sip a cocktail, and enjoy the beats of local DJs! \$8 admission at the door. Ages 21+ only.

MARCH

Garden to Glass: Totally Tropical 📍

Thursday, March 26, 6-7:30 p.m.

Discover the plants, stories, and people that make the tropical Bolz Conservatory one of Madison's most iconic places! This sensory experience includes a signature cocktail.

The Canopy Sessions 📍

Friday, March 6, 5-7 p.m.

NEW! Enjoy live music performed from the tropical canopy of the Bolz Conservatory! \$5 admission at the door.

Member Preview: Spring Flower Show

Saturday, March 7, 8-10 a.m.

Members get an exclusive first look at the Spring Flower Show!

Spring Flower Show 📍

March 7-22, 10 a.m.-4 p.m. daily

Meander through an array of blooming spring flowers in an elaborate display in the Atrium. Free for Olbrich members!

TRIPS



Nova Scotia & Prince Edward Island

August 17-24, 2020

From rugged cliffs and sandy beaches to wildlife-filled bays and peaceful coves, Nova Scotia's beauty beckons. Featured on this unique tour:

- **Cabot Trail**, one of the world's most scenic drives on Cape Breton Island
- **Peggy's Cove Lighthouse**, a preservation area famed for its picturesque and typically East-Coast profile

- The **Halifax Public Garden**, the oldest Victorian-style garden in North America
- **Hopewell Rocks**, sandstone formations carved by time and tide in the Bay of Fundy
- **Tangled Garden**, five acres of gardens including a flowering labyrinth, plus a shop offering small batch jams, vinegars, oils, and cordials made with fresh herbs from the gardens and fruits from local Annapolis Valley farms



PLANT SALE WITH THE PROS

Friday, May 8, 11 a.m.-5 p.m.
Saturday, May 9, 9 a.m.-3 p.m.

TRAM SERVICE

Weekend Service Begins May 2
Daily Service Begins May 25

Cocktails in the Conservatory 🍷

Friday, March 27, 7-11 p.m.

Stroll through Olbrich's Bolz Conservatory, sip a cocktail, and enjoy the beats of local DJs! \$8 admission at the door. Ages 21+ only.

A P R I L

The Canopy Sessions 🎵

Friday, April 3, 5-7 p.m.

NEW! Enjoy live music performed from the tropical canopy of the Bolz Conservatory! \$5 admission at the door.

Garden to Glass: Totally Tropical 🍷

Thursday, April 23, 6-7:30 p.m.

Discover the plants, stories, and people that make the tropical Bolz Conservatory one of Madison's most iconic places! This sensory experience includes a signature cocktail.

M A Y

Dahlia Tuber Sale

By the Badger State Dahlia Society

Sunday, May 3, 11 a.m.-2 p.m.

Get tubers and already-growing dahlia plants from award-winning "parents" at very reasonable prices.

Guided Garden Strolls 🌿

Sundays, May 3-October 11, 1:30 & 3 p.m.

Get an insider's view of Olbrich's outdoor gardens during a free guided garden stroll. All ages are welcome for this casual overview of the Gardens. Meet in the Visitor Center Lobby.

Early Shopping! Plant Sale with the Pros 🍷

Friday, May 8, 9-11 a.m.

Olbrich Botanical Society Patron, Benefactor, Angel, Circle/Lifetime members, and Legacy Society members are invited to shop early! Olbrich members and the public may also shop during this special time for \$20 per person or \$30 per couple.

Plant Sale with the Pros

Friday, May 8, 11 a.m.-5 p.m.

Saturday, May 9, 9 a.m.-3 p.m.

Get great plants and expert advice from area professionals. This annual fundraising sale features everything from annuals and perennials to ornamental grasses and shrubs. Olbrich's horticulture staff carefully chooses unique plants that grow best in this climate. Olbrich members save 20% off purchases in the Growing Gifts shop on Friday, May 8!

African Violet Sale

By the Crosstown African Violet Club

Saturday, May 9, 9 a.m.-4 p.m.

This annual sale includes African violets, starter plants, blooming plants leaves, gesneriads of all kinds, and potting soil and pots. Call 608-850-9740 for more information.

Mother's Day Concert

Sunday, May 10, 2-3 p.m.

Come to Olbrich to stroll through the spring blooms or tropical Bolz Conservatory and enjoy a concert by the New Horizons Concert Band. Concert will be held outside if weather permits. \$2 suggested donation.

Bonsai Show

By the Badger Bonsai Society

Saturday, May 16, 9 a.m.-4:30 p.m.

Sunday, May 17, 10 a.m.-4:30 p.m.

Marvel at these growing miniature landscapes. Call 608-249-6195 for information.

Iris Show

By the Madison Area Iris Society

Sunday, May 31, 12-5 p.m.

The Madison Area Iris Society organizes this show of colorful iris blooms.

Hosta Auction

By the Wisconsin Hosta Society

Sunday, May 31, 12-2 p.m.

Pick up some interesting hostas to add to your collection! These shade-loving perennials, prized for their interesting foliage, come in a variety of sizes, shapes, and colors. For more information, email wihostasociety@gmail.com.

🍷 — Event requires admission

- **Harriet Irving Botanical Gardens**, explore a plant collection divided into nine unique habitats found in the Acadian Forest Region.
- **Prince Edward Island**, known as "Garden of the Gulf", referring to the pastoral scenery and lush agricultural lands, also home of Anne of Green Gables

- **Vesey's Seed**, offers seasonal bulbs, flower, vegetable, fruit, and herb seeds. Every variety available in the catalog has been carefully tested at the Vesey's 40-acre research farm.

For more info, or to book this trip visit CountryTravelDiscoveries.com/NVG or call 855-744-8747.





Phalaenopsis sp.



Renanthera monachica



Cattleya trianaei



Brassacattleya 'Maikai' and Laelia anceps 'Disciplinata'



Piragmipedium 'Eumelia Arias'



Dendrobium sulcatum

Orchid Escape: Olbrich's First Orchid Show

This year, escape to the tropics and take in bountiful, beautiful orchids throughout the Bolz Conservatory! In keeping with Olbrich's 2020 Elements theme, the inaugural Orchid Escape show will be comprised of four scenes, each representing one of the four classical elements: earth, water, air, and fire. The orchid-focused scenes feature imagery inspired by volcanic rocky outcroppings, mangrove forests, tropical epiphytic canopies, and temperate woodlands.

Orchids have played a central role at the gardens since the opening of the Bolz Conservatory in 1991. The permanent orchid collections have grown significantly over the past few decades thanks to

dedicated Olbrich staff, as well as generous community members. Given the importance of orchids at Olbrich, the conservatory team wanted to create an event that highlighted this amazing plant family.

Visit Orchid Escape in the Bolz Conservatory from 10 a.m. to 4 p.m. daily through February 29. Visitors will be able to view each of the four scenes as they make their way along the Conservatory's meandering paths. Come escape the winter weather and step in to your very own tropical orchid paradise!

TERRY HODGE, *Conservatory & Orchid Horticulturist*

Don't Miss... Orchids in the Bolz Conservatory!

All of these orchids will be on display throughout the Bolz Conservatory during the Orchid Show!



Vanda orchids are a fascinating group of orchids that are native to southeast Asia where they grow primarily as epiphytes on trees.



Dendrobium orchids are one of the largest groups of orchids with more than 1,600 species found throughout Asia and Australia.



Paphiopedilum orchids are also known as Asian slipper orchids. These plants are found throughout Asia where they typically grow in limestone outcroppings.



Spring Flower Show

As spring approaches, most people are ready to get away from the long winter, so this year we're making it possible to get to places far beyond the mundane world.

The Spring Flower Show will take you to realms of fantasy and the imagination, fire and water, King Arthur and Scheherazade. Tulips, daffodils, and hyacinths lead into the season, with fragrance and color to help you forget the monotone winter landscape. Earth and sky work together in a flowering meadow, perhaps visited by a unicorn. Storybook worlds are settings for luxurious floral displays, set in a dark and mysterious wood, a burning desert, or around a stone castle. Living treasure flows from chests, while peacocks

wander among fountains and frogs hide in cool green bogs. Earth, water, air, and fire work together to produce the abundant flower and lush foliage of flowers, grasses, ferns, shrubs, and trees, all on display in the light-filled Atrium.

The magic will happen March 7-22, from 10 a.m. to 4 p.m. daily. Step outside the world of work and school, clocks and calendars, go far away from the snow and ice, and step into an otherworldly spring of fantasy and flowers.

DAN SCHUKNECHT, Horticulturist

The Canopy Sessions

Olbrich's winter concerts are moving into the tropical Bolz Conservatory! Now called The Canopy Sessions, these performances will take place from 5-7 p.m. on the first Fridays of February, March, and April. Jump start your weekend with live music performed in one of Madison's most unique venues. Enjoy a cocktail, beer, or glass of wine and stroll through the lush tropics while taking in tunes from local and regional artists. \$5 admission at the door - cash only.

*Note: No carry-in chairs allowed.
Limited bench seating available.*

Friday, February 7, 5-7 p.m.

Ancora String Quartet
Classical String Quartet

Friday, March 6, 5-7 p.m.

B~Free & Quinten Farr
Jazz/Soul Fusion

Friday, April 3, 5-7 p.m.

Panchromatic Steel
Island Music, Jazz, & Hits played on steel drums



Rose Garden Scout Volunteers

Olbrich's Rose Garden has undergone many changes over the past 15 years. Like the rest of the garden, we want to emphasize our commitment to sustainable gardening. We believe investing in people, plants, and wildlife over chemicals is very important!

Our first step in the right direction was to remove the hybrid tea roses in the fall of 2016. These roses needed regular spraying to prevent pests such as black spot, powdery mildew, rust, mites, thrips, and aphids. Roses are challenging plants to maintain in an environmentally friendly way; the use of pesticides negatively affects our pollinators and beneficial insects.

In the past 30 years, Olbrich has practiced integrated pest management (IPM), applying a variety of cultural, biological, and physical techniques before resorting to pesticides, and completely pesticide-free gardening is always Olbrich's preferred choice. Attracting beneficial insects, washing plants, mulching, and hand weeding are environmentally friendly methods we employ to avoid using harmful chemicals.

In recent years, the only pesticide we sprayed was Spinosad, a certified organic insecticide derived from the bacterium *Saccharopolyspora spinosa*, an effective treatment for the

Tobacco or Rose Budworm, *Heliothis virescens*. Unfortunately, research from the Xerces Society for Invertebrate Conservation found that even pesticides allowed for organic agriculture can harm beneficial insects.

During our evaluation of alternatives, we found that parasitic wasps (*Trichogramma spp.*) are natural predators of Rose Budworm. After the Rose Budworm moth lays eggs, this microscopic wasp parasitizes the eggs, the wasp larvae (good guy!) develops in the host egg and the moth larvae (bad guy!) never emerges to do damage to our roses.

Perfect! But, did we already have parasitic wasps in the garden? Were they already controlling any budworms? Before giving up on roses completely, we decided to experiment with releasing beneficial insects to supplement existing populations. But, how would we find time to evaluate beneficial insects when we barely have enough time to maintain the existing garden?!

We needed more eyes on the ground... and that is how the Rose Garden Scouts Volunteer Team was born! We enlisted a team of awesome volunteers who were interested in all things BUGS!



Candy-Striped Leafhopper

Though the Candy-Striped Leafhopper (*Graphocephala coccinea*) may be the best dressed bug around, it can be a pest. It has piercing-sucking mouthparts that allow it to feed on plant sap in leaves which causes stippling, discoloration and an increased potential to spread disease.



Goldenrod Soldier Beetle

Goldenrod Soldier Beetles (*Chauliognathus pennsylvanicus*) are an excellent beneficial insect! Often spotted with European honeybees on multi-flowered perennials, such as *Allium spp.* or *Calamintha spp.* They are good predators, eating aphids, caterpillars, eggs and other soft-bodied insects.



Roseslug Sawfly Larvae

Roseslug sawfly (*Endelomyia aethiops*) is an insect native to Europe that causes cosmetic damage, creating a skeletonized pattern on leaves of roses in May and June.



Volunteers in the Garden

Dee Massey & Therese Strome gathering data (and Japanese Beetles!) in the Rose Garden.



Team Goals:

- Identify existing insects
- Monitor insect populations
- Trial release of beneficial insects
- Track insect damage
- Research perennials to attract beneficial insects
- Create a new learning opportunity for all staff & volunteers

Seven volunteers worked independently from mid-April until the end of October giving 150+ hours of service to this project. Each week, they observed “hot spot” areas to monitor beneficial insects, gather data, track insect damage, and remove Japanese Beetles and other pests. Each month we hosted a team meeting which featured “show & tell” of interesting insects, recap of findings, special trainings and presentations, hands-on demonstrations, and of course, homework assignments! Their main homework was to research plants that attract and support various types of beneficial insects. This winter, we will cross-compare their plant lists to identify the plant species that support the greatest diversity of insects.

Our scouts found many not-so-great insects that created cosmetic damage, but also many beneficial insects and pollinators! The most fascinating finds were: Candy-striped Leafhoppers, Painted Lady & Skipper Butterflies, Goldenrod Soldier Beetles, Great Black Wasp, and three different instars of Black Swallowtail Caterpillars!

When we needed help with insect identification, we directed many questions to PJ Liesch, director of the UW-Madison Insect Diagnostic Lab. Knowing the exact species found allows us to use more accurate treatment and control options. If you have a bug question, visit <http://labs.russell.wisc.edu/insectlab/contact-us/> for more information.

With more data collection over the next couple of years we will be able to evaluate the success of our approach. We have learned so much this year and are looking forward to improving our team in 2020! If you are interested in financially supporting this program, please contact Joe Vande Slunt, Olbrich's Director of Development at jvandeslunt@cityofmadison.com or 608-246-4583. With your help, we would be able to purchase insect identification books, a handheld digital microscope camera, beneficial insects, as well as perennials that attract beneficial insects to plant in the garden next summer. Our Rose Garden Scouts Team and Olbrich's beneficial insects greatly appreciate your support!

KATEY PRATT, Olbrich Horticulturist



Great Black Wasp

Don't be afraid of this abnormally large wasp! The Great Black Wasp (*Sphex pensylvanicus*) can look very intimidating but they are solitary nesters with no hive or colony to protect, most are actually very shy and difficult to photograph! They capture crickets, grasshoppers, katydids and cicadas to leave as a food source for their larvae.

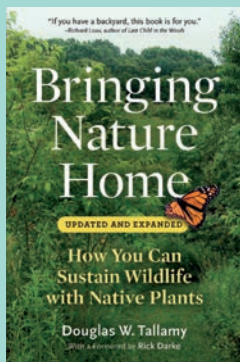


Trichogramma

These cards are filled with thousands of *Trichogramma* pupae inside parasitized moth eggs. There are approximately 4,000 eggs per square inch! We hung these on roses throughout the garden this past summer.



Garden Project Planner: Winter Reading



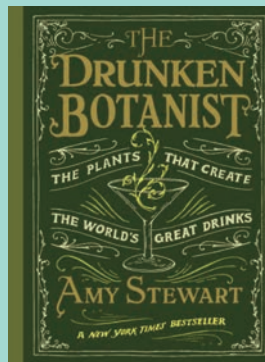
BRINGING NATURE HOME, Doug Tallamy

After reading this book, you won't be able to look at the outdoors the same again. With so many mind-boggling statistics to reinforce his messages, Tallamy will leave you in awe and motivated to make a change. Tallamy is also coming out with a new book this spring, *Nature's Best Hope*, which is sure to be another good read.



A NEW GARDEN ETHIC, Benjamin Vogt

Passion for the natural world and compassion for human and nonhuman species shines through on every page. Vogt advocates for native species in our gardens and wildness in our lives, as a critical component of our response to a changing world, and does so on small and large scales with humor and lived experience.



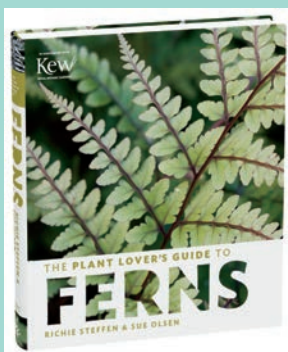
THE DRUNKEN BOTANIST, Amy Stewart

To warm up during the cold months, crack this book and learn about nearly every plant used to make or flavor beer, wine, or spirits, then wet your whistle while planning what to grow for your summer cocktail. It's an entertaining and exhaustive reference, full of history, humor, and botanical detail.



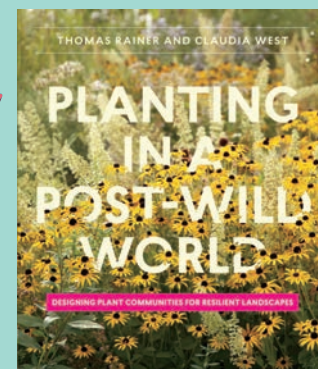
FLORET FARM'S CUT FLOWER GARDEN, Erin Benzakein

This book guides you through everything you need to know to grow, harvest, and arrange your own seasonal blooms. Benzakein shares her life as a flower farmer, walking us through the process of planting, cultivating, and harvesting over 175 varieties of flowers. She even offers expert tips on arranging bouquets, and making garlands and wreaths to show off blooms from your own garden.



THE PLANT LOVERS GUIDE TO FERNS,

Richie Steffen and Sue Olsen Ferns! They offer so much texture, beauty, and depth in the garden. Discerning between species of ferns and their cultural needs can be confusing at first, but this book is a game-changer with enticing photos and concise descriptions of both common and unfamiliar garden-worthy ferns. With just enough information to build excitement without overwhelming, it's a good addition in Timber Press' awesome *Plant Lover's Guide* series.



PLANTING IN A POST-WILD WORLD, Thomas Rainer & Claudia West

Truly an inspirational read, driving home the new gardening trends of "right plant, right place" and "creating plant communities." With so many amazing pictures and diagrams to help you grasp the concepts, it had me extremely excited to start re-designing the gardens.



PLANT IT ON THE PATIO

Small Scale Success!

A real joy of working in a relatively compact garden like Olbrich is the ability to use garden spaces to demonstrate small scale gardening styles that visitors can readily apply at home. With an increasing segment of Madison's population living and gardening in apartments and condos, as well as the priority many people here place on high quality and locally grown food, we explored the rapidly expanding world of container vegetable gardening in the summer of 2019.



The Herb Garden's "Plant It on the Patio" demonstration garden was first laid with salvaged Garver Feed Mill bricks, with striking glazed pots to set the stage. We scoured seed catalogs for vegetables bred specifically for containers; compact size, disease resistance, and early ripening of fruit or vegetables are all characteristics that contribute to success when growing in containers.

By midsummer, our patio garden was overflowing with produce that we donated to the Goodman Community Center for distribution through their food pantry and meal programs. Most of the vegetables we selected were real winners! 'Prizm' kale produced buckets of greens on squat plants that resembled mini palm trees by season's end. We harvested a steady supply of sweet orange 'Eros' snack peppers and adorable 'Fairy Tale' eggplants. Whenever we had a spare pot, we planted 'Mascotte' beans which produced fine textured green beans in only about 50 days. Carefree flowers, a patio table, and chairs covered with vines, and a water bowl filled with a floating blooms and foliage all lent personal touches.



"Plant It on the Patio" was so much fun we are carrying the theme through the 2020 season! This year, the Herb Garden will highlight plants used in Indian food, medicine, and garden design. Join in the fun by participating in our summer classes and workshops exploring Indian garden plants and how to use them (details coming in late spring). Swing by the Herb Garden this summer to experience the patio transformed into a stylish Indian rooftop garden, incorporating exotic herbs and spices, bold tropicals, and bright colors!

ERIN PRESLEY, *Olbrich Horticulturist*



TO LEARN MORE about incorporating edible plants in your gardens, register for Erin's class "Edibles in Every Garden" on Tuesday, February 11, from 6:30-8 p.m.



TRIBUTES & MEMORIAL GIFTS

Tribute Trellis, tribute, and memorial gifts to the Olbrich Botanical Society keep the gardens growing for everyone in our community. Thank you for these Tribute Trellis, tribute, and memorial gifts received July 1–November 30, 2019.

TRIBUTES

- In honor of Barb Norene**
Patricia A Schulz
- In honor of Cindy Sullivan**
Roberta Sladky
- In honor of Don Steinmetz's 75th birthday, for Olbrich's new greenhouses**
Marleen Lippert
- In honor of Jacqueline Orloff**
Susan and Jeffrey Orloff
- In honor of Jane Rouleau and Bob Chiesa**
Kirk and Maribeth Malnor
- In honor of Margo McKnight, a very helpful friend**
Lise Skofronick
- In honor of Marleen Lippert's 80th birthday**
Sarah Perkins
- In honor of Marty Petillo**
Peggy and Rocky Johnson
- In honor of Milton and Emily Ford**
Roberta Sladky
- In honor of Sena Heron Pollock**
Carol Pfeffer

TRIBUTE TRELLIS

- ANTONIETTA KINSELLA**
Nina Kurt
- FLORENCE'S FLOWERS**
Susan and Steven Huss-Lederman
- FOREVER IN OUR HEARTS
JEAN HODEL WE LOVE YOU**
Shela and Bill Westrate
- GAY & MARK 50 YEARS**
Karen Bruner and Judy Morris Hardy
- IN MEMORY J A PHILLIPS**
James Phillips
- IN MEMORY OF CARRIE SCOTT**
Faye Guenther
- IN MEMORY OF GLEN SINGER**
Nelia Olivencia
- JANET BIRCH IN MEMORY**
The Beutel Family
- JEANNIE ANN KOSAK READ**
Barbara Schlaefer
- JERRY B MEMORIES ♥
BLOOMS FOR RUTHY ♥**
Chris Williams
- JOANN HENRICKSON**
Davide, Lisa and Matthew Spadoni
- JOE MARGRAF LOVE FOREVER**
Kathleen Margraf

- KATHRYN BECK 8 15 28 - 11 29 17**
Martha and Daniel Beck
- LOVE ALWAYS KATHI SULLIVAN**
Shirley A Birkle
- MAMUSKA ♥ BABCIA ♥**
Janina Juszczuk
- MITCH & AMY 7/15/2011**
Amy and Mitch Christiansen
- MOM LOVES FLOWERS & ME**
Cassandra and Vanessa Sheehy
- SKIP + TINA WEDD 81719**
Tom and Randi Payne
- SUE AND BILL WOOD**
Karen and Joe Eckberg
- SUSAN NIELSEN MILLER**
Amy and Phil Scarr
- VIBRANT SOUL LOUISE W.**
Bob Taylor
Holly Walker
Kay Bradley

MEMORIALS

- In memory of Anne Stuart**
Dr Ray and Mary Evert
Betty and John Nicka
- In memory of Anonymous**
Judith and William Holt

- In memory of Audrey Giles**
Mary Manering and Dennis Tande
- In memory of Barbara Reinberger**
Tara and Steve Von Dollen
- In memory of Boyd R Whitt, Jr**
Candice Hillary
Edward and Colleen Sheard
Jeanne and Jeff Hilger
Joy Newman
Larry and Jan Rader
Richard Brown and Rose Faber
- In memory of Carrie Scott**
Suzanne Frey
- In memory of Char Gepner**
Jane Egl and Ron Binter
- In memory of Dr Harold and Mary Borenz**
Joanne and Cliff Dibelius
- In memory of Edward J Loos**
Peggy and Rocky Johnson
- In memory of Fannie Hicklin**
Roberta Sladky
- In memory of Gerald "Jerry" Anton Schellpfeffer**
Anonymous
Barbara and Charles Cashman
Barbara L Mason
Christine E Cannon
Della Rancourt
Elaine Kloepfel
Emily Shaw



James and Nancy Herritz
 Jan and Robert Devoe
 Judith and William Hogan
 Linda and Terry Anderson
 Mary M Langenfeld
 Merlin and Verna Maiers
 Nancy Derauf
 Rochelle Moses
 Thomas and Michelle Reynolds
 Timothy and Stacey Ryan

In memory of Harriet Hotchkiss
 Sylvia and William Beckman

In memory of Henry Luffer, Jr
 Joel Skornicka
 Judy Karofsky

In memory of Jack Crook
 Ann Conway
 Howard and Christine Gyga
 Jane Kyle
 Kevin Creed
 Mary Jo Kohout
 Nona Suhr
 Maria and Randy Altmayer

In memory of James Orrin Swenson
 Katie Kelsner and Robert Swenson

In memory of Janet Lynn Birch
 Charles and Terri Neider

In memory of Janine Finke
 Ronald G and Audrey M Huseth

In memory of Jenni and Kyle
 Sally Wilmeth and Terry Geurkink

In memory of Jerry Bobholz
 Chris Williams

In memory of Jim Fitzpatrick
 Carol and Martin Clarke

In memory of JoAnn Henrickson
 Christa Schonscheck
 Sabrina Breitenbach
 Sara Koeni

In memory of Margaret Wonn
 Judith Van Blarcom

In memory of Kathleen Thompson
 Ardis and Stephen Zwicky

In memory of Kathryn Beck
 Martha and Daniel Beck

In memory of Kenneth Opitz
 Loraine Zeier

In memory of Lloyd Arndt
 Mary and David Schleif
 Arndt Family Trust

In memory of Mabel Hummel
 William Sommers

In memory of Mary and Jeff Davis
 Chris and Kathy Davis

In memory of Mary Kelsey
 Donna Plaisted and Mike Maresh

In memory of Michael Miyagawa
 Michelle Honore and Bill Robbins

In memory of Nancy Hood
 Judy and Jacklyn Da Walt

In memory of Patricia Rickey
 Roberta Sladky
 Virginia Kaufman

In memory of Phyllis Bengry
 Beverly and Dennis Campbell

In memory of Rita Ann Dupuis
 Alan and Vicki Hamstra

Barbara Bergum
 Barbara Moseng
 Barbara and Bill Tensfeldt
 Bonnie and John Verberkmoes
 Cindy and Robert Zellers
 Daniel Maki

David and Sara Tilsen
 Ellen Gojmerac and Dan Olsen
 Erwin F Koenig

Eugene and Sharon Kostroski
 Frank Arevalo
 Frank and Gayle Moore

Helene Marsh
 Jacob J Immel
 Jim Mollenhoff

Joe and Molly Vande Slunt
 John G Davis

Katie Kelsner and Robert Swenson
 Linda Christensen

Linda McHugh
 Louise and Mike Beldon
 Lynn Jacobson and Matt Connell

Mark and Linda Malkin
 Mary Anne Long and Jan Gray
 Michael and Jeanne Linden
 Michael and Greta Adler
 Rene Dupuis
 Riley Pierce and Helene Hardy Pierce
 Roberta Sladky
 Ronald Berman
 Russ and Jean Endres
 Sharon Omernick
 Sheila Cockrell
 Therese and Daniel Strome
 Thomas and Judith Ahles

In memory of Sue C Plater
 Mary Maynard

In memory of Thomas Kermit Holloway
 Roberta Sladky





OLBRICH BOTANICAL GARDENS' WISH LIST

Our growing public garden has many needs! Here are some ideas on how you can help. For more information, contact Olbrich's Director of Development Joe Vande Slunt at 608-246-4583 or jvandeslunt@cityofmadison.com.



BOLZ CONSERVATORY SUPPORT

Light Up the Night – If you have driven past the tropical Bolz Conservatory at night, you may have noticed the beautiful colors that light the glass for all to enjoy. The issue? The current indoor lights don't always appreciate the moist, humid environment, which leads to intermittent lighting outages. Upgrade this system so it can weather the wet conditions. - \$2,500

A New Explorer Station – Tucked into the corner of the first floor of the Bolz Conservatory is a bamboo station used for educational displays and classes. Built in 1991, it's time to rebuild and expand this high-traffic area. - \$5,000



OUTDOOR GARDEN SUPPORT

Landscaping the Learning Center – In late spring, our horticulture staff will begin to landscape the new Frautschi Family Learning Center. Help send them on plant shopping spree to spruce up the place. – \$5,000, with any size donation appreciated. Please indicate "Learning Center Landscaping" on donation.

Sponsor a Horticulture Intern – Each summer, a new team of horticulture interns arrive, eager to learn and work in the gardens. These positions foster our educational mission by providing on-the-job training for students while keeping our garden beautiful. In fact, half of Olbrich's current horticulture staff began as an Olbrich Intern. Invest in our next plant pro today! - \$2,500, with any size donation appreciated. Please indicate "Horticulture Intern" on donation.



NEW ART IN THE COMMONS

Former Director of the Chazen Museum of Art Russell Panczenko has photographed and curated a selection of high-resolution images of Olbrich Gardens to be displayed in Olbrich's William T. Evjue Commons. These images from his personal collection are printed on specially coated sheets of aluminum for a brilliant and long-lasting finish. - \$3,075



SPONSOR A PROGRAM

Consider becoming a program partner for one of the following programs, which generate important funds for the gardens while providing memorable experiences for our guests. For more information, please contact Joe Vande Slunt at 608-246-4583 or jvandeslunt@cityofmadison.com.

Spring Flower Show – March 7-22, 2020

A stunning scene of hand-crafted displays bursting with fresh blooming spring flowers. Adults and children alike will delight in this imaginative first glimpse of spring!

Partnership Levels: \$1,000 - \$5,000

Garden to Glass: Totally Tropical

A sensory experience through Olbrich's Bolz Conservatory lead by an explorer, including a signature cocktail created using ingredients that are locally sourced or responsibly sourced from the tropical rainforest.

Partnership Levels: \$1,000 - \$4,000

Elements: 2020 Programmatic Theme

A year-long effort highlighting Olbrich's commitment to sustainable gardening practices and how the elements play a role in sustaining, creating, and renewing life in the Gardens!

Partnership Levels: \$2,500 - \$10,000

Olbrich Botanical Gardens' Classes

SWEET GRASS AND PINE NEEDLE BASKET WEAVING

Saturday-Sunday, March 7-8, 9:30 a.m.-4 p.m.

Registration deadline: February 26

In this two-day workshop, you'll make a coiled basket that incorporates both sweet grass and pine needles.

Cost: \$130 / \$106 member

STRAIGHT & NARROW PLANTS

Tuesday, March 31, 6:30-8 p.m.

Registration Deadline: March 23

Do you have limited space in your garden and need narrow-growing plant options? Learn about the many diverse plants that tend to be narrow or dwarf, as well as other new plant options for small spaces.

Cost: \$15 / \$12 member

PERENNIAL GARDEN MAINTENANCE

Thursday, April 30, 6:30-8 p.m.

Registration deadline: April 20

This class will feature designs and plantings to help make your garden easier to maintain, giving you more time to sit back and enjoy the view.

Cost: \$17 / \$13 member



Photo by Lorie Anna



Photo by Hanneke Tanzer Hilliard

FAN PHOTOS

Olbrich's Facebook Fans post great photos of the Gardens and Conservatory year-round. Here are some of our favorites! Post your photos of the Gardens on our Facebook page and they may end up here!

GOT A GREAT SNAPSHOT?

Share it with us on Facebook and you could see it printed here!



Photo by Alnisa Allgood

GROWING AND USING HERBS

Wednesday, May 6, 6:30-8:30 p.m.

Registration deadline: April 27

Are you looking for an easy way to "spice" up your cooking? Discover the basics of herb gardening, from choosing the right plant for the right purpose to adding their vibrant flavors and aromas to culinary dishes.

Cost: \$15 / \$12 member



Olbrich Garden News is published 4 times a year by the Olbrich Botanical Society as a benefit to members.

MISSION

Olbrich Botanical Gardens is operated as a public-private partnership between the City of Madison Parks Division and the non-profit Olbrich Botanical Society.

Olbrich Botanical Gardens enriches life by nourishing and sharing the beauty of the gardens, the joy of gardening, the knowledge of plants, and the diversity of our world.

Olbrich Botanical Gardens is dedicated to the creation, conservation, and interpretation of gardens and plant collections hardy to the American Midwest or native to the world's tropical forests for study, enjoyment, and public benefit.

VISION

Olbrich Botanical Gardens will be a locally treasured and globally renowned source of beauty and education celebrating the importance of plants in a sustainable world.

INCLUSION

Olbrich Botanical Gardens aspires to be a destination where all visitors, volunteers, and staff are valued and feel they belong. With conscious intent and continuous learning, OBG staff, volunteers, and board will address barriers to inclusion through education, operational changes, and partnerships with the community.

DESIGN, LAYOUT & PRINTING

American Printing Company

ORIGINAL DESIGN Huston Design

General Information	608-246-4550
Growing Gifts Shop	608-246-4710
Schumacher Library	608-246-5805
Membership	608-246-4724

If you need an interpreter, materials in alternative formats, or other accommodations to access Olbrich Gardens' services, activities, or programs, please contact 608-246-4550 or TDD 608-267-4980. Please do so within 48 hours of the scheduled program so that appropriate arrangements can be made in a timely fashion.

BOLZ CONSERVATORY

10 a.m. – 4 p.m. daily

OUTDOOR GARDENS

November – March 9 a.m. – 4 p.m.

April – August, 9 a.m. – 8 p.m.

September – October 9 a.m. – 6 p.m.

GROWING GIFTS SHOP

10 a.m. – 4 p.m. daily

SCHUMACHER LIBRARY

10 a.m. – 4 p.m. daily



visit www.olbrich.org

3330 ATWOOD AVE • MADISON, WI 53704
Phone 608.246.4550 • Events 608.246.4718



/OlbrichBotanicalGardens

/OlbrichGardens

/OlbrichGardens

NONPROFIT ORG
US POSTAGE
PAID
MADISON WI
PERMIT NO 1295

Volume 34 Number 4 Winter 2020 www.olbrich.org



Growing Gifts Shop
Open 10 a.m.-4 p.m. daily
Unique garden-themed items for the whole family, including many locally made and sustainable products!

